



**SAFE  
WORK**  
MANITOBA™

**The Manitoba Workplace Injury Statistics Report**

**2007-2016**

## Table of Contents

<b>Methodology Note for 2007-2016 Injury Statistics Report .....</b>	<b>3</b>
<b>Major Highlights of Manitoba Workplace Injury Data, 2007 to 2016.....</b>	<b>3</b>
<b>1.0 INJURY RATES .....</b>	<b>4</b>
1.1 Time Loss Injury Rates .....	4
Figure 1 - Manitoba Time Loss Injury Rate, 2007 to 2016.....	4
1.2 All Injury Rate .....	5
Figure 2 - Manitoba All Injury Rate for 2007 to 2016.....	5
1.3 Injury Rates by Age Group and Gender .....	6
Table 1 - Time Loss Injury Rate by Age Group and Gender, 2007 to 2016 .....	6
Figure 3 - Time Loss Injury Rate by Age Group and Gender, 2016.....	7
Figure 4 - Time Loss Injury Rate by Age Group 2007 to 2016 .....	8
Figure 5 - Male Time Loss Injury Rate by Age Group, 2007 to 2016.....	9
Figure 6 - Female Time Loss Injury Rate by Age Group 2007 to 2016.....	10
1.4 Industry Sector and Sub-Sector Rates.....	11
Table 2 - Time Loss Injury Rates by WCB Industry Sectors and Selected Sub-Sectors.....	11
Figure 7 - Time loss Injury Rate by Sector, 2007 to 2016 .....	13
Table 3 - All Injury Rate by WCB Industry Sectors and Selected Sub-Sectors, 2007 to 2016 ..	14
Figure 8 - All Injury Rate by WCB Industry Sectors, 2007 and 2016 .....	16
Figure 9 - All Injury Rate and Time Loss Injury Rate, Selected Manufacturing Sub-Sectors, 2016.....	17
Figure 10 - All Injury Rate and Time Loss Injury Rate, Other Industry Sub-Sectors, 2016 .....	18
<b>2.0 WORKPLACE FATALITIES .....</b>	<b>19</b>
2.1 Acute-Hazard and Occupational Disease Fatalities.....	19
Figure 11 - Acute-Hazard and Occupational Disease Fatalities, 2007 to 2016 .....	19
Figure 12 - Acute Hazard and Occupational Disease Fatalities, 2007 to 2016 by Cause .....	20
Figure 13 - Acute-Hazard and Occupational Disease Fatalities by Occupation, 2007 to 2016.....	21
Figure 14 - Distribution of Acute-Hazard and Occupational Disease Fatalities by Age, 2007 to 2016.....	22
2.2 Acute-Hazard Fatalities.....	23
Table 4 - Acute-Hazard Fatalities, 2016 .....	23
Table 5 - Acute-Hazard Exposure Fatalities by Industry, 2007 to 2016 .....	24
Figure 15 - Acute-Hazard Fatalities by WCB Industry Sectors, 2007 to 2016 .....	25
2.3 Occupational Disease Fatalities .....	26
Table 6 - Occupational Disease Fatalities Accepted by the WCB, 2007 to 2016 .....	26
Table 7 - Occupational Disease Fatalities, 2016.....	27
<b>3.0 WORKPLACE INJURY AND ILLNESS ANALYSIS .....</b>	<b>28</b>
3.1 Time Loss and No Time Loss Injuries .....	28
Table 8 - Notified and Accepted Time Loss and No Time Loss Injuries, 2007 to 2016.....	28
Figure 16 - Trends in Time Loss and No Time Loss Injuries, 2007 to 2016 .....	29
3.2 Accepted Injuries by Age Group.....	30
Table 9 - Injuries by Age Group, 2007 to 2016 .....	30
Figure 17 - Proportion of All Injuries and Employment by Age Group, 2016.....	31
Figure 18 - All Injuries by Age Group, 2007 to 2016 .....	32
3.3 Accepted Injuries by Gender .....	33
Table 10 - Injuries by Gender, 2007 to 2016 .....	33
Figure 19 - Injuries by Gender, 2007 to 2016 .....	34
3.4 Injuries by Industry Sector .....	35
Table 11 - Time Loss Injuries by WCB Industry Sectors and Selected Sub-Sectors .....	35
Table 12 - All Injuries by WCB Industry Sectors and Selected Sub-Sectors .....	37
Figure 20 - Proportions of All Injuries and FTE Workers by WCB Industry Sectors, 2016 .....	39
Figure 21 - Time Loss Injury Trends in WCB Occupational Groupings, 2007 to 2016 .....	40
Figure 22 - Percent Distribution of All Injuries by WCB Industry Sectors, 2007 to 2016.....	41
Figure 23 - Male Injuries by WCB Industry Sectors, 2007-2016.....	42
Figure 24 - Female Injuries by WCB Industry Sectors, 2007 to 2016 .....	43
3.5 Occupations of Injured and Ill Workers (Time Loss Injuries Only) .....	44
Table 13 - Injuries by Occupational Groups, 2007 to 2016.....	44
3.6 Part of Body Injured .....	45
Table 14 - All Injuries by Part of Body Injured ("Stickman Codes"), 2007 to 2016.....	45
Table 15 - Time Loss Injuries by Part of Body Affected, 2007 to 2016.....	46
3.7 Time Loss Injuries by Nature of Injury or Illness.....	46
Table 16 - Time Loss Injuries by Nature of Injury or Illness, 2007 to 2016 .....	46
3.8 Time Loss Injuries by Source of Injury or Illness .....	47
3.9 Time Loss Injuries by Event or Exposure of Injury or Illness .....	49
Table 18 - Time Loss Injuries by Type of Event or Exposure of Injury or Illness, 2007 to 2016 .....	49
3.10 Musculoskeletal Injuries.....	50
Table 19 - Musculoskeletal Time Loss Injuries (MSI), 2007 to 2016 .....	50
Figure 25 - The Proportion of Musculoskeletal Injuries, 2007 to 2016.....	51



## Methodology Note for 2007-2016 Injury Statistics Report

This report is developed from the Workers Compensation Board of Manitoba (WCB) injury data for the years 2007-2016. The report is based on injuries which the WCB was notified and that were accepted by the WCB, or fatalities.

This year's injury statistics report follows the new format that was introduced in 2015 for industry sectors. The self-insurers and optional sectors have been integrated into their requisite sectors and sub-sectors. For example, airlines and railways have been placed into the transportation sector, Province of Manitoba and City of Winnipeg into public administration, etc. Also healthcare, formerly part of the service sector now is a separate industry sector by itself.

This year's report contains 10 years of data covering 2007-2016.

## Major Highlights of Manitoba Workplace Injury Data, 2007 to 2016

### INJURIES AND INJURY RATE TRENDS

- The provincial time loss injury rate fell from a high of 4.2 time loss injuries per 100 workers in 2007 to 2.9 in 2016. This is a drop of 31 per cent over the period.

### FATALITIES

- The number of occupational fatalities varies significantly from year to year. In 2016, there were 12 acute hazard fatalities and 12 occupational disease fatalities in both WCB covered and non-covered workplaces.

### MUSCULOSKELETAL INJURIES

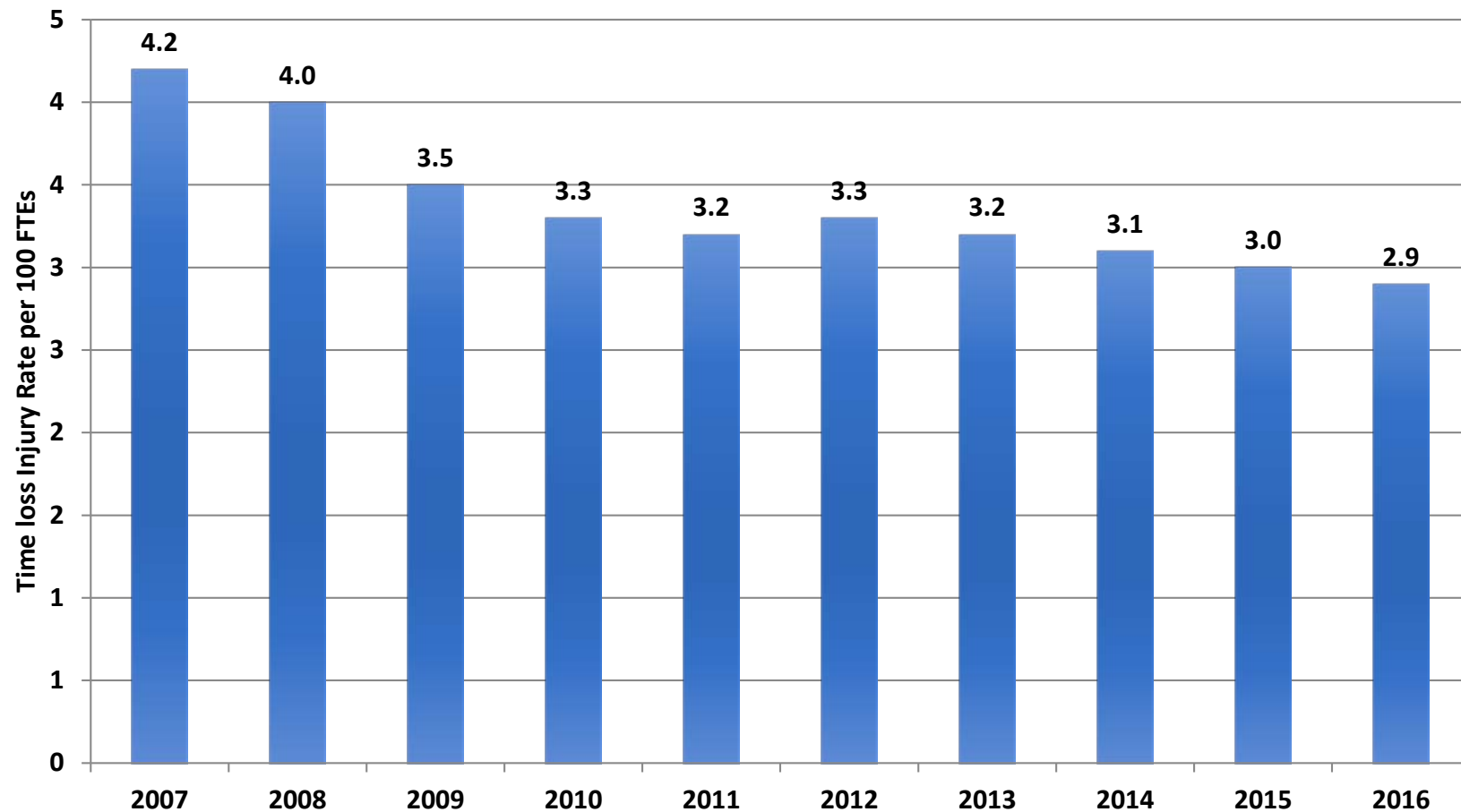
- Musculoskeletal injuries, or MSIs, are injuries to or disorders of the muscles, tendons, ligaments, joints, nerves, blood vessels or related soft tissue including sprains, strains and inflammation. The total number of MSIs decreased substantially in 2009 and again in 2010 (the largest year over year decrease in 10 years), increasing again through 2014, declining in 2016 to 61 per cent of all time loss injuries.



## 1.0 INJURY RATES

### 1.1 Time Loss Injury Rates

Figure 1 - Manitoba Time Loss Injury Rate, 2007 to 2016<sup>1</sup>

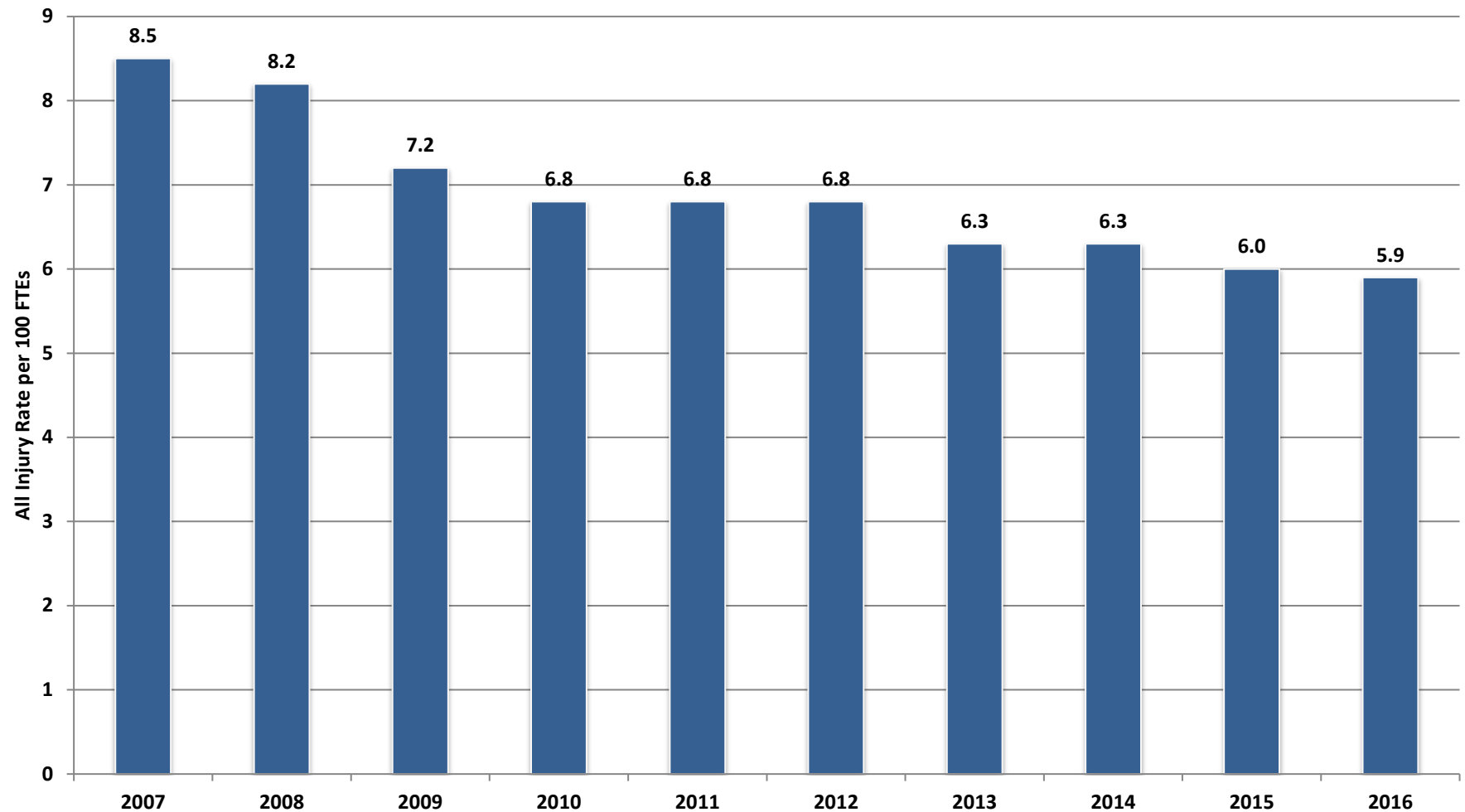


<sup>1</sup> Estimates of full-time equivalent workers are based on Statistics Canada average weekly earnings and WCB payroll information. Starting in 2012, the WCB adopted the average weekly earnings series based on the 2012 North American Industry Classification System (NAICS) instead of NAICS 2007. The previous years' injury rates have not been restated.



## 1.2 All Injury Rate

Figure 2 - Manitoba All Injury Rate for 2007 to 2016<sup>2</sup>



<sup>2</sup> Estimates of full-time equivalent workers are based on Statistics Canada average weekly earnings and WCB payroll information. Starting in 2012, the WCB adopted the average weekly earnings series based on the 2012 North American Industry Classification System (NAICS) instead of NAICS 2007. The previous years' injury rates have not been restated.



### 1.3 Injury Rates by Age Group and Gender

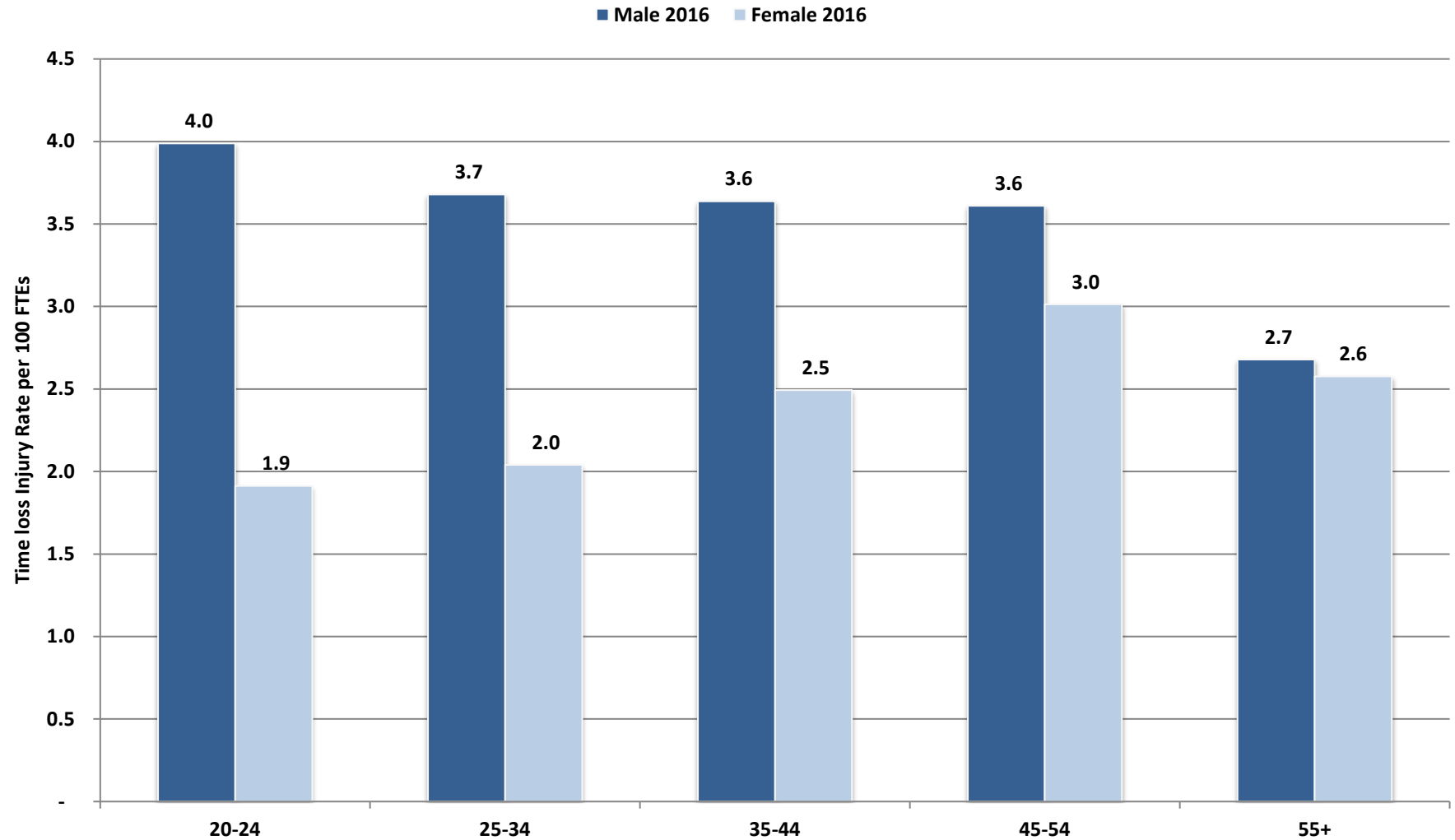
**Table 1 - Time Loss Injury Rate<sup>3</sup> by Age Group and Gender, 2007 to 2016**

Age Group	Year of Injury or Illness									
Male Age Group	2007	2008	2009	2010	2011	2012	2013	2014	2015	2016
15-19	3.3	3.6	3.0	3.1	3.4	3.8	3.3	3.4	3.0	2.5
20-24	6.4	6.4	4.9	4.6	4.8	4.9	4.3	4.5	4.2	4.0
25-34	6.1	5.7	4.8	4.7	4.6	4.4	4.3	4.3	3.9	3.7
35-44	5.6	5.0	4.4	4.6	4.6	4.4	4.4	4.1	4.0	3.6
45-54	5.2	5.0	4.5	4.1	4.2	4.2	4.3	3.9	3.8	3.6
55+	3.6	3.4	3.0	2.6	2.7	2.8	2.6	2.8	2.6	2.7
<b>Total Male</b>	<b>5.3</b>	<b>5.1</b>	<b>4.4</b>	<b>4.0</b>	<b>4.1</b>	<b>4.4</b>	<b>3.9</b>	<b>3.8</b>	<b>3.6</b>	<b>3.4</b>
Female Age Group										
15-19	1.2	1.3	1.0	1.2	1.0	1.3	1.2	1.2	1.5	1.2
20-24	2.4	2.0	2.0	1.9	1.8	2.0	2.0	2.1	2.1	1.9
25-34	2.3	2.3	2.2	2.3	1.9	2.1	2.1	2.1	2.0	2.0
35-44	3.1	3.2	2.8	2.9	2.6	2.6	2.5	2.5	2.4	2.5
45-54	3.6	3.3	3.0	3.0	2.8	2.9	2.9	2.8	3.0	3.0
55+	3.1	3.0	2.8	2.2	2.3	2.4	2.3	2.5	2.2	2.6
<b>Total Female</b>	<b>2.8</b>	<b>2.8</b>	<b>2.5</b>	<b>2.5</b>	<b>2.3</b>	<b>2.5</b>	<b>2.3</b>	<b>2.3</b>	<b>2.2</b>	<b>2.3</b>
Age Group										
15-19	2.3	2.4	2.0	2.2	2.2	2.5	2.2	2.3	2.2	1.8
20-24	4.5	4.3	3.5	3.3	3.4	3.5	3.3	3.4	3.1	3.0
25-34	4.4	4.2	3.6	3.5	3.3	3.4	3.3	3.3	3.0	2.9
35-44	4.7	4.4	3.9	3.8	3.7	3.6	3.5	3.4	3.2	3.0
45-54	4.4	4.2	3.8	3.6	3.5	3.6	3.6	3.4	3.7	3.3
55+	3.4	3.2	2.9	2.4	2.5	2.7	2.6	2.7	2.4	2.6
<b>Total All</b>	<b>4.2</b>	<b>4.0</b>	<b>3.5</b>	<b>3.3</b>	<b>3.2</b>	<b>3.3</b>	<b>3.2</b>	<b>3.1</b>	<b>3.0</b>	<b>2.9</b>

<sup>3</sup> Estimates of full-time equivalent workers are based on Statistics Canada average weekly earnings and WCB payroll information. Starting in 2012, the WCB adopted the average weekly earnings series based on the 2012 North American Industry Classification System (NAICS) instead of NAICS 2007. The previous years' injury rates have not been restated.



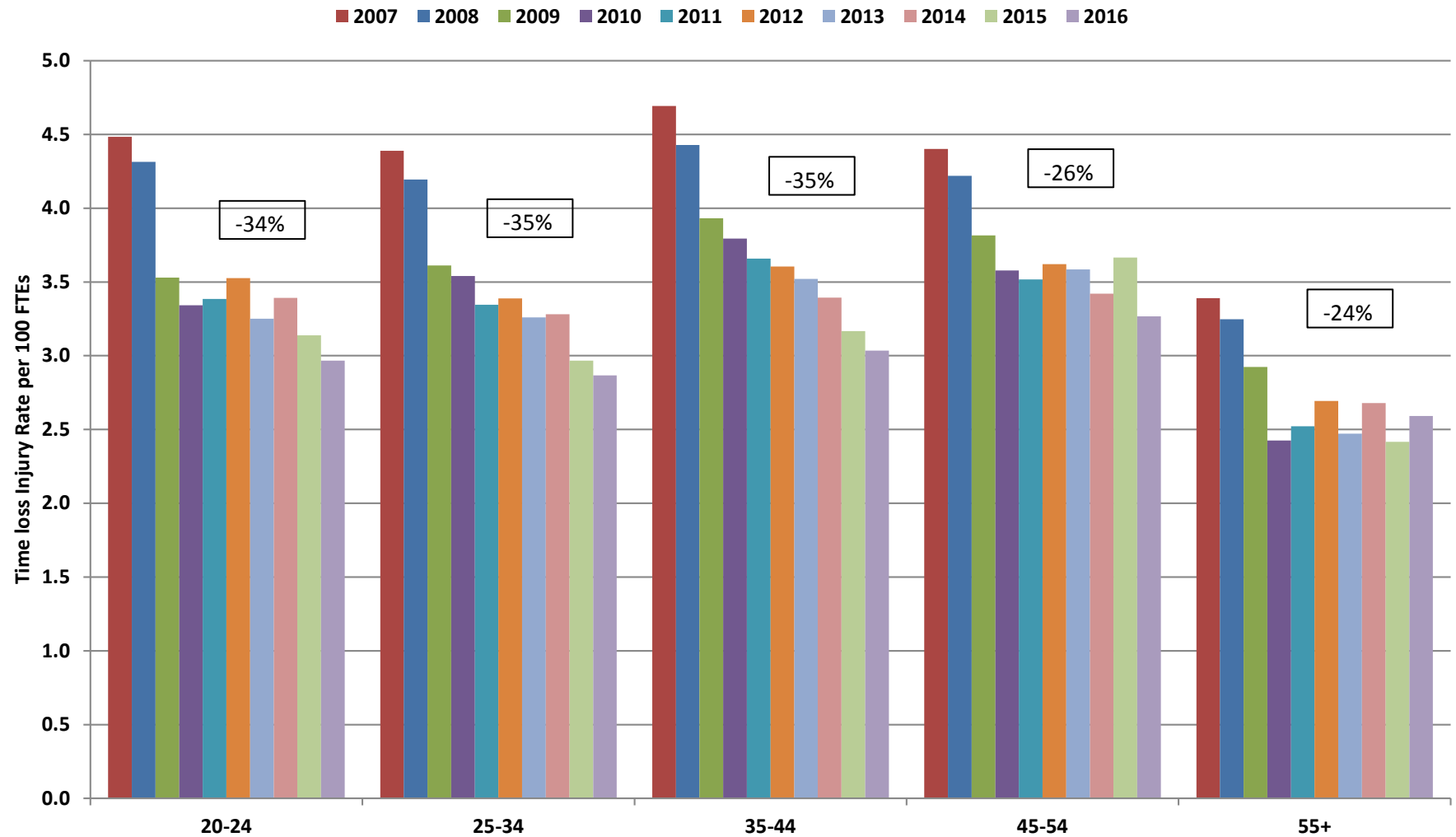
**Figure 3 - Time Loss Injury Rate<sup>4</sup> by Age Group and Gender, 2016**



<sup>4</sup> Estimates of full-time equivalent workers are based on Statistics Canada average weekly earnings and WCB payroll information. Starting in 2012, the WCB adopted the average weekly earnings series based on the 2012 North American Industry Classification System (NAICS) instead of NAICS 2007. The previous years' injury rates have not been restated.



Figure 4 - Time Loss Injury Rate<sup>5</sup> by Age Group 2007 to 2016

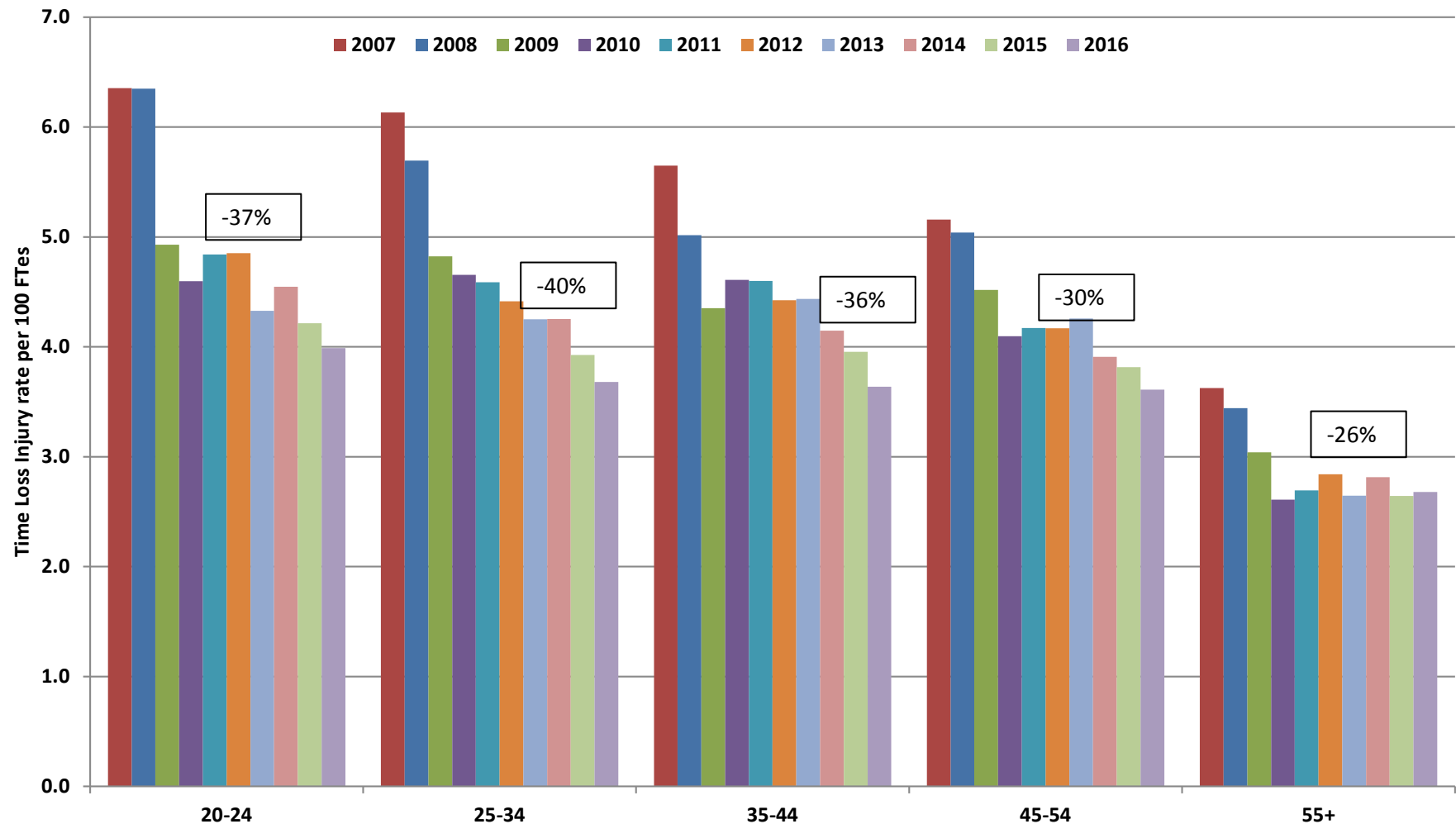


<sup>5</sup> Estimates of full-time equivalent workers are based on Statistics Canada average weekly earnings and WCB payroll information. Starting in 2012, the WCB adopted the average weekly earnings series based on the 2012 North American Industry Classification System (NAICS) instead of NAICS 2007. The previous years' injury rates have not been restated.





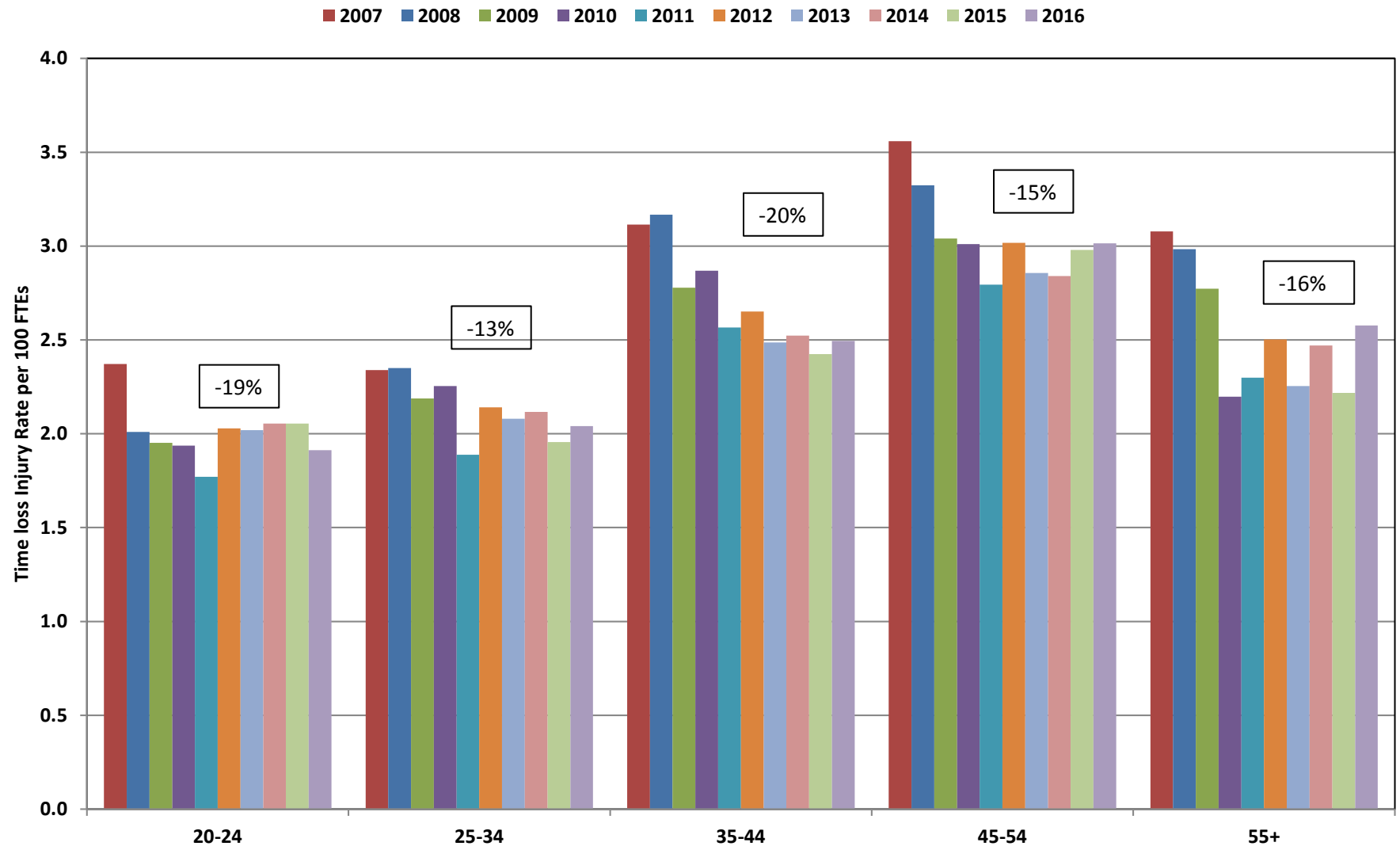
Figure 5 - Male Time Loss Injury Rate<sup>6</sup> by Age Group, 2007 to 2016



<sup>6</sup> Estimates of full-time equivalent workers are based on Statistics Canada average weekly earnings and WCB payroll information. Starting in 2012, the WCB adopted the average weekly earnings series based on the 2012 North American Industry Classification System (NAICS) instead of NAICS 2007. The previous years' injury rates have not been restated.



Figure 6 - Female Time Loss Injury Rate<sup>7</sup> by Age Group 2007 to 2016



<sup>7</sup> Estimates of full-time equivalent workers are based on Statistics Canada average weekly earnings and WCB payroll information. Starting in 2012, the WCB adopted the average weekly earnings series based on the 2012 North American Industry Classification System (NAICS) instead of NAICS 2007. The previous years' injury rates have not been restated.



## 1.4 Industry Sector and Sub-Sector Rates

**Table 2 - Time Loss Injury Rates by WCB Industry Sectors and Selected Sub-Sectors**

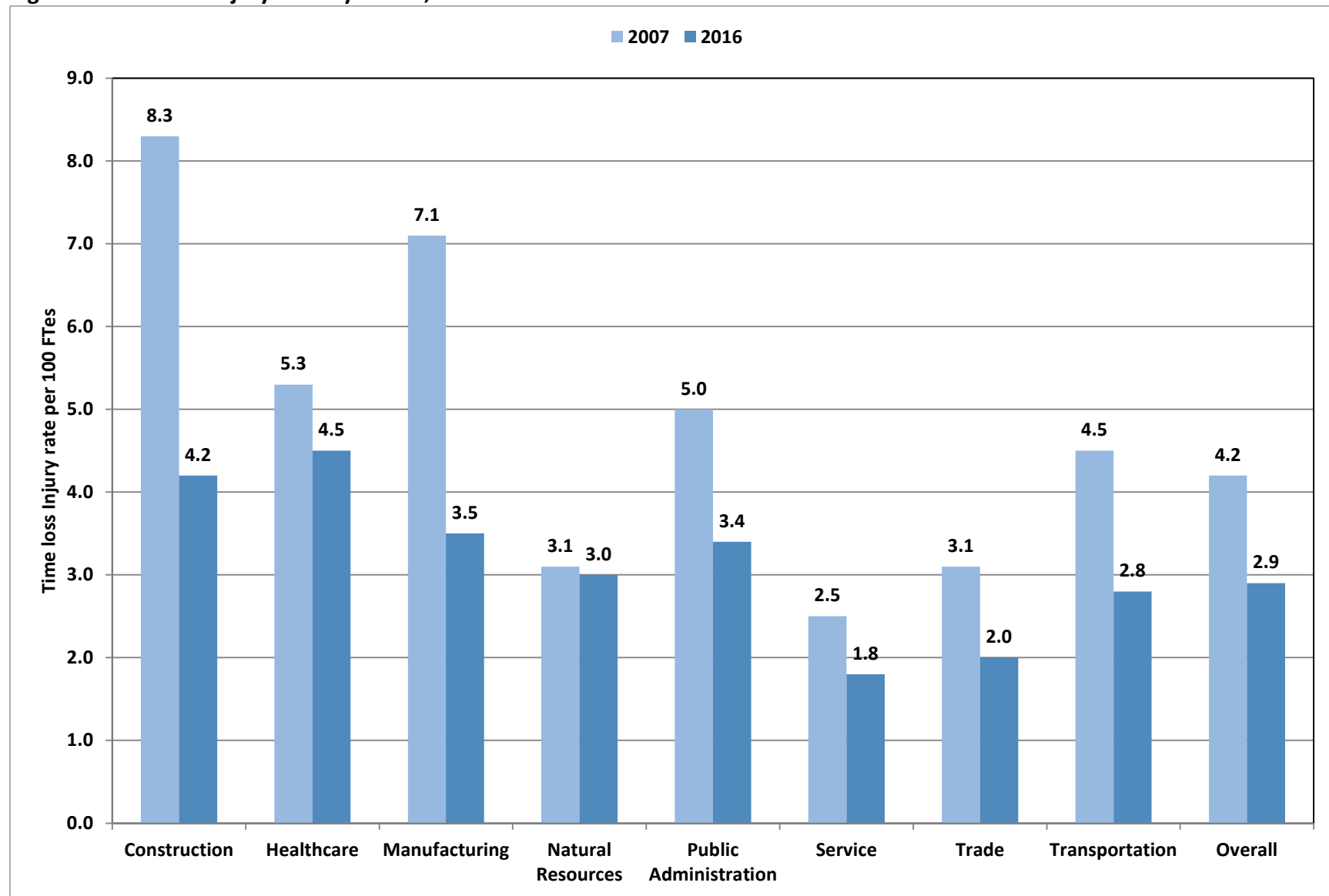
WCB Industry Sectors and Selected Sub-Sectors	2007	2008	2009	2010	2011	2012	2013	2014	2015	2016
<b>Construction</b>	<b>8.3</b>	<b>7.6</b>	<b>6.5</b>	<b>5.8</b>	<b>6.0</b>	<b>6.0</b>	<b>5.4</b>	<b>5.2</b>	<b>4.9</b>	<b>4.2</b>
Building Construction	8.7	8.3	7.0	6.1	6.4	6.4	5.6	5.4	5.0	4.4
Heavy Construction	6.9	5.1	4.7	4.7	4.5	4.5	4.5	4.5	4.7	3.7
<b>Healthcare</b>	<b>5.3</b>	<b>5.6</b>	<b>5.2</b>	<b>5.2</b>	<b>4.7</b>	<b>4.7</b>	<b>4.4</b>	<b>4.5</b>	<b>4.4</b>	<b>4.5</b>
<b>Manufacturing</b>	<b>7.1</b>	<b>6.3</b>	<b>5.2</b>	<b>4.6</b>	<b>4.6</b>	<b>4.6</b>	<b>4.2</b>	<b>4.2</b>	<b>3.9</b>	<b>3.5</b>
Agriculture Manufacturing	3.7	3.9	3.4	2.8	4.0	4.0	3.7	4.7	3.5	3.9
Aircraft Manufacturing and Repair	2.8	3.3	2.5	2.9	2.4	2.4	2.6	2.5	1.8	1.7
Clothing/ Textile Manufacturing	3.2	5.1	3.3	3.2	3.5	3.5	2.3	2.7	3.1	2.4
Construction Manufacturing	7.7	7.1	5.8	5.1	5.0	5.0	4.0	4.4	4.4	4.5
Food & Beverage Processing	6.0	4.7	4.6	4.1	3.8	3.8	2.8	3.2	3.1	3.2
Heavy Metal Working	12.8	12.2	8.8	7.6	8.1	8.1	7.0	6.6	5.6	5.6
Light Manufacturing	7.4	5.9	5.4	5.0	4.8	4.8	4.3	3.9	4.1	3.0
Manufacturing Chemicals/Paint	3.8	2.9	3.1	2.8	2.1	2.1	2.3	2.4	2.4	1.4
Manufacturing Electronics	2.1	1.5	1.2	1.0	0.5	0.5	1.2	0.6	0.9	0.9
Manufacturing Medication	2.3	2.7	2.7	2.0	3.6	3.6	2.1	3.3	2.4	2.1
Meat Processing	5.7	3.0	3.4	2.9	2.1	2.1	3.0	2.8	2.3	2.4
Paper & Printing	4.9	3.1	3.4	4.4	3.6	3.6	3.2	2.4	2.6	1.9
Other Manufacturing	3.2	2.9	2.7	2.5	2.2	2.2	1.9	2.2	2.4	2.0
Plastic Manufacturing	10.0	10.8	7.4	7.7	5.8	5.8	5.8	5.0	6.0	3.4
Vehicle Manufacturing	8.7	7.5	8.6	6.8	6.9	6.9	6.7	6.8	6.2	4.3
Wood & Millwork	9.3	7.6	5.9	5.0	4.9	4.9	5.0	5.2	5.5	4.8
<b>Natural Resources</b>	<b>3.1</b>	<b>3.3</b>	<b>3.3</b>	<b>3.2</b>	<b>3.1</b>	<b>3.1</b>	<b>2.5</b>	<b>2.7</b>	<b>2.6</b>	<b>3.0</b>
Agriculture	5.2	4.8	4.9	4.5	4.3	4.3	3.3	3.3	2.8	3.2
Commercial Fishing	1.1	1.2	1.3	-	1.3	1.3	-	1.1	2.0	0.0
Forestry	8.5	6.3	8.5	6.7	8.4	8.4	3.7	4.1	3.8	3.0
Mining	2.0	2.6	1.7	1.9	2.2	2.2	1.8	2.2	2.3	3.1
Other mining	2.9	2.9	1.7	2.3	1.7	1.7	2.0	2.2	2.2	1.6
<b>Public Administration</b>	<b>5.0</b>	<b>4.9</b>	<b>4.3</b>	<b>3.9</b>	<b>4.0</b>	<b>4.0</b>	<b>3.9</b>	<b>3.5</b>	<b>3.4</b>	<b>3.4</b>
<b>Service</b>	<b>2.5</b>	<b>2.2</b>	<b>2.0</b>	<b>1.9</b>	<b>1.7</b>	<b>1.8</b>	<b>1.8</b>	<b>1.8</b>	<b>1.7</b>	<b>1.8</b>



WCB Industry Sectors and Selected Sub-Sectors	2007	2008	2009	2010	2011	2012	2013	2014	2015	2016
Accommodation and Restaurants	2.1	2.1	1.9	1.6	1.5	1.6	1.5	1.6	1.4	1.3
Business Services	2.4	2.1	1.5	1.5	1.7	1.5	1.6	1.4	1.3	1.1
Educational Institutions	4.6	2.2	2.1	2.5	2.0	2.2	2.2	2.3	2.3	2.6
Facilities Services	2.4	2.6	2.5	2.7	2.1	2.0	2.0	1.9	2.1	2.0
Other Services	2.6	2.3	1.3	0.9	1.1	1.2	1.1	1.3	1.4	1.2
Personal Services	3.7	3.1	2.8	2.3	2.4	2.2	2.3	2.1	2.1	2.3
Social Services	1.2	1.6	1.5	1.4	1.6	1.7	1.9	1.7	2.3	2.6
<b>Trade</b>	<b>3.1</b>	<b>3.0</b>	<b>2.6</b>	<b>2.5</b>	<b>2.3</b>	<b>2.2</b>	<b>2.2</b>	<b>2.3</b>	<b>2.1</b>	<b>2.0</b>
Automotive Related	4.7	4.8	4.0	3.7	3.4	3.3	2.9	3.2	3.0	3.0
Other Trade	3.8	3.7	2.9	2.8	2.7	3.9	4.0	3.3	3.3	3.0
Supermarket & Department Stores	2.5	2.4	2.2	2.1	1.9	1.9	1.9	1.9	1.7	1.7
Wholesaling	3.5	3.2	2.4	2.7	2.1	2.1	2.0	2.6	2.2	1.9
<b>Transportation</b>	<b>4.5</b>	<b>4.2</b>	<b>3.9</b>	<b>3.6</b>	<b>3.5</b>	<b>3.3</b>	<b>3.3</b>	<b>3.2</b>	<b>2.9</b>	<b>2.8</b>
Aviation	4.1	4.1	3.5	4.0	3.4	3.0	2.9	3.2	3.3	2.9
Other Transportation	6.2	5.3	4.7	4.0	4.2	3.7	3.5	3.7	3.4	2.8
Postal Service & Courier	9.1	9.5	8.0	7.6	9.9	11.3	11.1	10.7	8.8	8.4
Railway	3.0	2.3	2.2	2.2	1.8	1.6	1.9	1.8	1.4	1.5
Trucking	7.0	6.1	6.3	5.9	5.6	5.2	5.3	5.2	4.5	4.5
Utilities	1.8	1.6	1.6	1.4	1.2	1.2	1.0	1.0	1.0	0.9
Warehousing	2.4	3.2	2.7	2.7	1.8	1.2	1.4	1.6	1.8	2.1
<b>Total</b>	<b>4.2</b>	<b>4.0</b>	<b>3.5</b>	<b>3.3</b>	<b>3.2</b>	<b>3.3</b>	<b>3.2</b>	<b>3.1</b>	<b>3.0</b>	<b>2.9</b>



Figure 7 - Time loss Injury Rate by Sector, 2007 to 2016



**Table 3 - All Injury Rate by WCB Industry Sectors and Selected Sub-Sectors, 2007 to 2016**

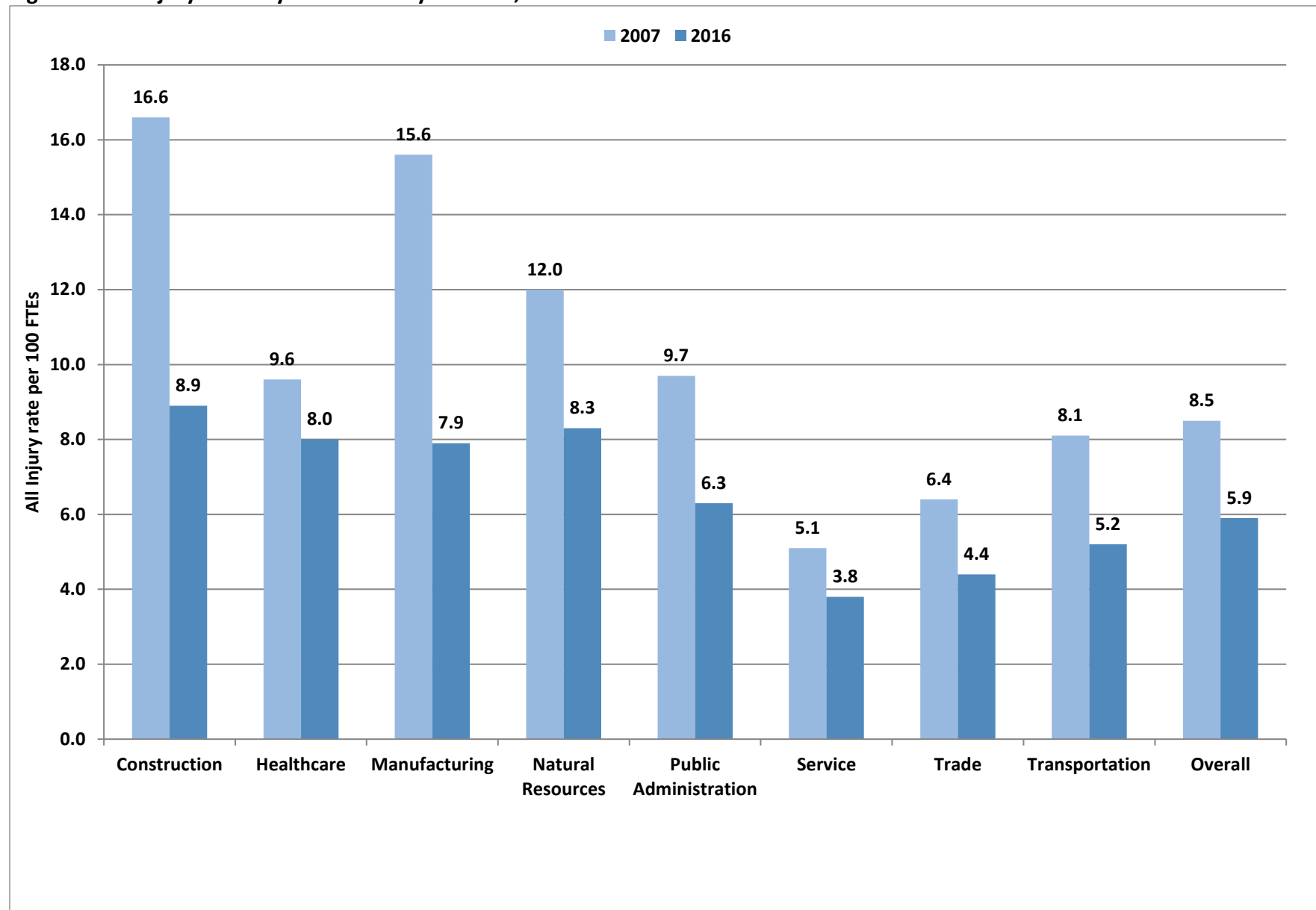
<b>WCB Industry Sectors and Selected Sub-Sectors</b>	<b>2007</b>	<b>2008</b>	<b>2009</b>	<b>2010</b>	<b>2011</b>	<b>2012</b>	<b>2013</b>	<b>2014</b>	<b>2015</b>	<b>2016</b>
<b>Construction</b>	<b>16.6</b>	<b>15.9</b>	<b>13.5</b>	<b>12.6</b>	<b>12.9</b>	<b>12.4</b>	<b>11.1</b>	<b>10.4</b>	<b>9.6</b>	<b>8.9</b>
Building Construction	17.3	16.9	14.2	13.0	13.7	13.1	11.4	10.7	9.8	9.1
Heavy Construction	13.8	12.1	11.1	10.6	10.0	9.5	9.6	8.9	8.9	8.5
<b>Healthcare</b>	<b>9.6</b>	<b>9.7</b>	<b>9.4</b>	<b>9.3</b>	<b>8.6</b>	<b>8.6</b>	<b>7.7</b>	<b>8.0</b>	<b>7.8</b>	<b>8.0</b>
<b>Manufacturing</b>	<b>15.6</b>	<b>14.0</b>	<b>11.5</b>	<b>10.3</b>	<b>11.1</b>	<b>10.4</b>	<b>9.3</b>	<b>9.0</b>	<b>8.5</b>	<b>7.9</b>
Agriculture Manufacturing	8.9	7.7	7.4	7.6	7.3	7.8	7.8	7.7	6.3	7.0
Aircraft Manufacturing and Repair	5.1	5.6	4.7	4.6	4.7	4.5	4.7	4.2	3.5	4.0
Clothing/ Textile Manufacturing	5.4	9.0	6.2	5.1	4.6	6.0	4.3	4.6	5.5	5.3
Construction Manufacturing	17.0	16.4	12.7	12.1	14.2	12.4	10.9	9.3	9.8	9.7
Food & Beverage Processing	11.1	9.8	9.3	7.7	8.9	7.7	6.4	6.9	6.7	6.8
Heavy Metal Working	27.6	25.5	18.8	16.8	19.9	17.9	14.4	14.5	12.4	12.6
Light Manufacturing	15.5	12.8	11.3	10.8	9.4	10.1	9.8	8.6	8.1	7.1
Manufacturing Chemicals/Paint	7.5	7.0	6.6	5.9	6.3	6.4	7.2	6.8	7.2	4.2
Manufacturing Electronics	3.0	2.9	2.2	1.4	1.8	1.4	1.9	1.1	1.8	1.7
Manufacturing Medication	5.8	5.9	4.6	3.4	6.3	6.1	4.0	5.4	4.4	3.9
Meat Processing	19.0	14.2	14.2	13.6	13.3	10.3	9.3	8.7	8.9	8.8
Other Manufacturing	18.4	14.2	10.1	10.5	7.8	8.0	7.3	7.3	5.1	4.5
Paper & Printing	6.4	5.7	5.2	4.6	4.8	4.7	4.1	4.4	4.8	3.9
Plastic Manufacturing	19.6	19.6	14.9	15.6	13.5	11.7	10.8	9.1	10.3	6.9
Vehicle Manufacturing	17.9	14.7	15.4	13.7	12.8	13.7	13.2	12.9	12.0	9.3
Wood & Millwork	22.4	18.6	14.4	11.1	11.8	11.2	11.7	11.3	12.2	11.0
<b>Natural Resources</b>	<b>12.0</b>	<b>12.7</b>	<b>10.0</b>	<b>9.9</b>	<b>8.5</b>	<b>9.1</b>	<b>8.0</b>	<b>8.3</b>	<b>7.9</b>	<b>8.3</b>
Agriculture	9.7	8.8	9.1	8.7	7.0	7.7	6.1	6.6	5.9	6.0
Commercial Fishing	3.4	1.2	1.3	1.4	4.6	1.3	-	2.2	2.0	1.2
Forestry	12.9	12.2	15.9	16.1	16.6	11.5	7.9	9.3	5.9	6.6
Mining	13.1	16.2	12.0	12.1	10.6	12.7	10.9	11.8	12.3	14.5
Other Mining	11.7	9.9	7.1	7.8	7.7	6.6	7.3	6.0	5.8	4.5
<b>Public Administration</b>	<b>9.7</b>	<b>9.2</b>	<b>8.1</b>	<b>7.5</b>	<b>8.0</b>	<b>7.3</b>	<b>7.1</b>	<b>6.4</b>	<b>6.1</b>	<b>6.3</b>
<b>Service</b>	<b>5.1</b>	<b>4.6</b>	<b>4.1</b>	<b>3.8</b>	<b>3.7</b>	<b>3.6</b>	<b>3.5</b>	<b>3.7</b>	<b>3.7</b>	<b>3.8</b>
Accommodation and Restaurants	4.5	4.5	4.1	3.5	3.4	3.4	3.1	3.4	3.2	3.0



WCB Industry Sectors and Selected Sub-Sectors	2007	2008	2009	2010	2011	2012	2013	2014	2015	2016
Business Services	4.7	4.0	2.7	2.8	3.0	2.6	2.8	2.8	2.6	2.4
Educational Institutions	9.9	5.0	4.3	4.8	4.3	4.2	3.9	4.4	4.6	4.9
Facilities Services	4.6	5.0	4.6	4.6	4.0	4.0	3.7	4.1	4.3	4.5
Other Service	6.6	6.1	3.3	3.5	3.1	3.3	3.2	3.5	3.4	2.9
Personal Services	6.6	5.2	5.6	4.6	4.6	4.7	4.4	4.0	4.0	4.8
Social Services	2.4	3.3	3.6	2.9	3.5	3.6	4.0	4.1	4.6	5.1
<b>Trade</b>	<b>6.4</b>	<b>6.2</b>	<b>5.4</b>	<b>5.3</b>	<b>5.0</b>	<b>4.7</b>	<b>4.4</b>	<b>4.9</b>	<b>4.4</b>	<b>4.4</b>
Automotive Related	9.5	9.0	8.0	7.3	7.5	6.9	5.9	6.7	5.9	6.1
Other Trade	9.9	9.8	7.3	7.1	6.9	9.5	9.7	10.3	10.3	10.9
Supermarket & Department Stores	5.2	5.0	4.6	4.6	4.2	4.0	3.8	3.9	3.5	3.5
Wholesaling	6.5	6.3	4.2	4.6	4.1	3.9	3.6	4.3	3.8	3.6
<b>Transportation</b>	<b>8.1</b>	<b>7.5</b>	<b>7.4</b>	<b>7.1</b>	<b>6.7</b>	<b>6.2</b>	<b>6.0</b>	<b>5.9</b>	<b>5.2</b>	<b>5.2</b>
Aviation	8.7	8.2	7.7	8.0	8.2	7.3	7.8	8.9	8.3	7.1
Other Transportation	10.0	9.8	8.5	7.5	7.1	7.0	6.7	6.6	5.7	5.5
Postal Service & Courier	14.5	14.5	12.8	12.4	14.7	15.2	14.9	15.0	13.4	13.7
Railway	8.7	7.0	7.1	6.9	6.2	5.5	5.6	4.5	3.8	4.2
Trucking	10.8	9.6	10.2	9.9	9.3	8.4	8.5	8.1	7.1	7.2
Utilities	3.9	3.7	3.7	3.6	3.2	2.9	2.4	2.5	2.3	2.1
Warehousing	4.4	5.2	5.8	6.0	4.3	4.4	3.8	4.0	3.4	4.0
<b>Total</b>	<b>8.5</b>	<b>8.2</b>	<b>7.2</b>	<b>6.8</b>	<b>6.8</b>	<b>6.8</b>	<b>6.3</b>	<b>6.3</b>	<b>6.0</b>	<b>5.9</b>



Figure 8 - All Injury Rate<sup>8</sup> by WCB Industry Sectors<sup>9</sup>, 2007 and 2016

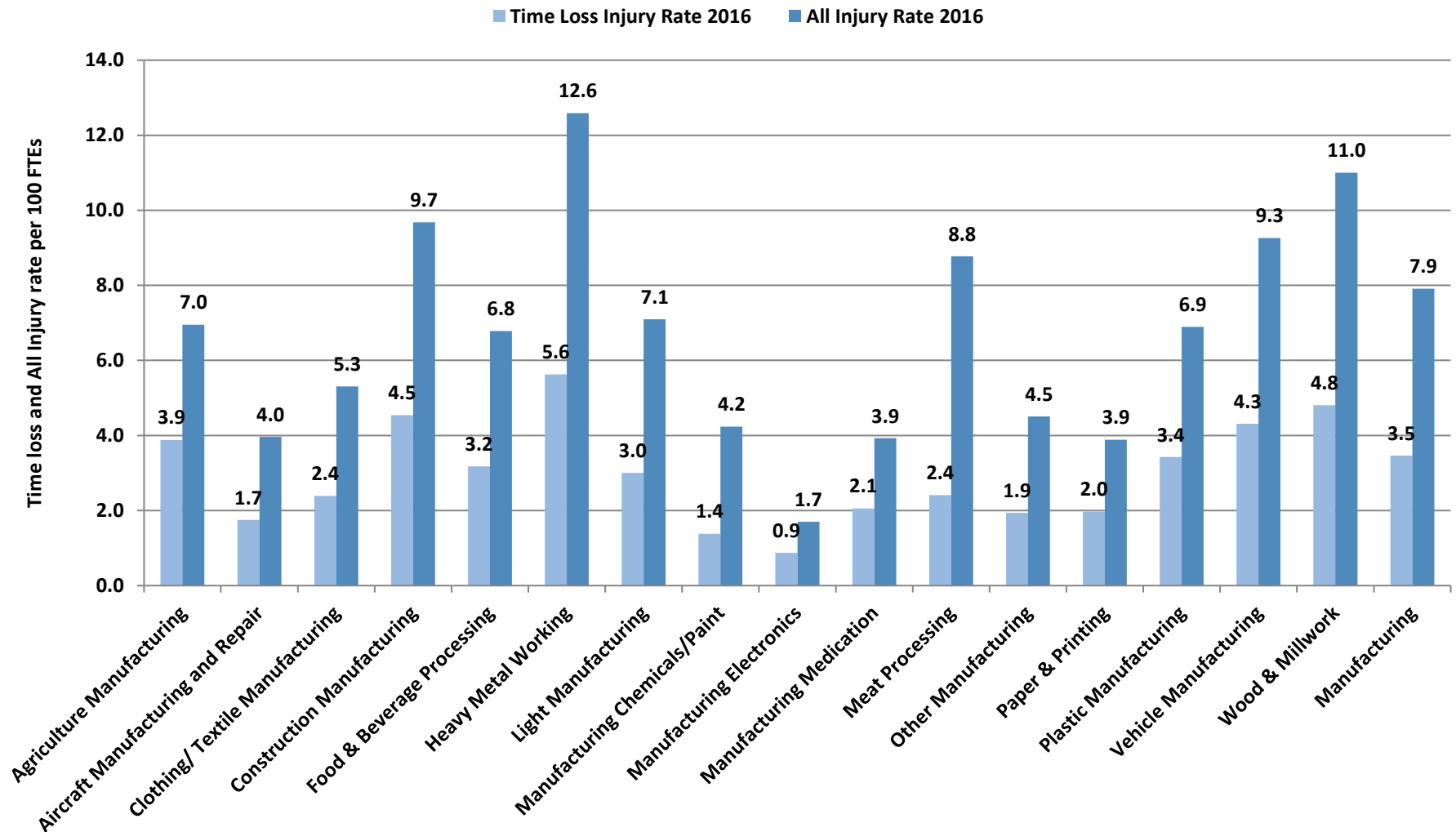


<sup>8</sup> Estimates of full-time equivalent workers are based on Statistics Canada average weekly earnings and WCB payroll information. Starting in 2012, the WCB adopted the average weekly earnings series based on the 2012 North American Industry Classification System (NAICS) instead of NAICS 2007. The previous years' injury rates have not been restated.





Figure 9 - All Injury Rate<sup>10</sup> and Time Loss Injury Rate, Selected Manufacturing Sub-Sectors, 2016

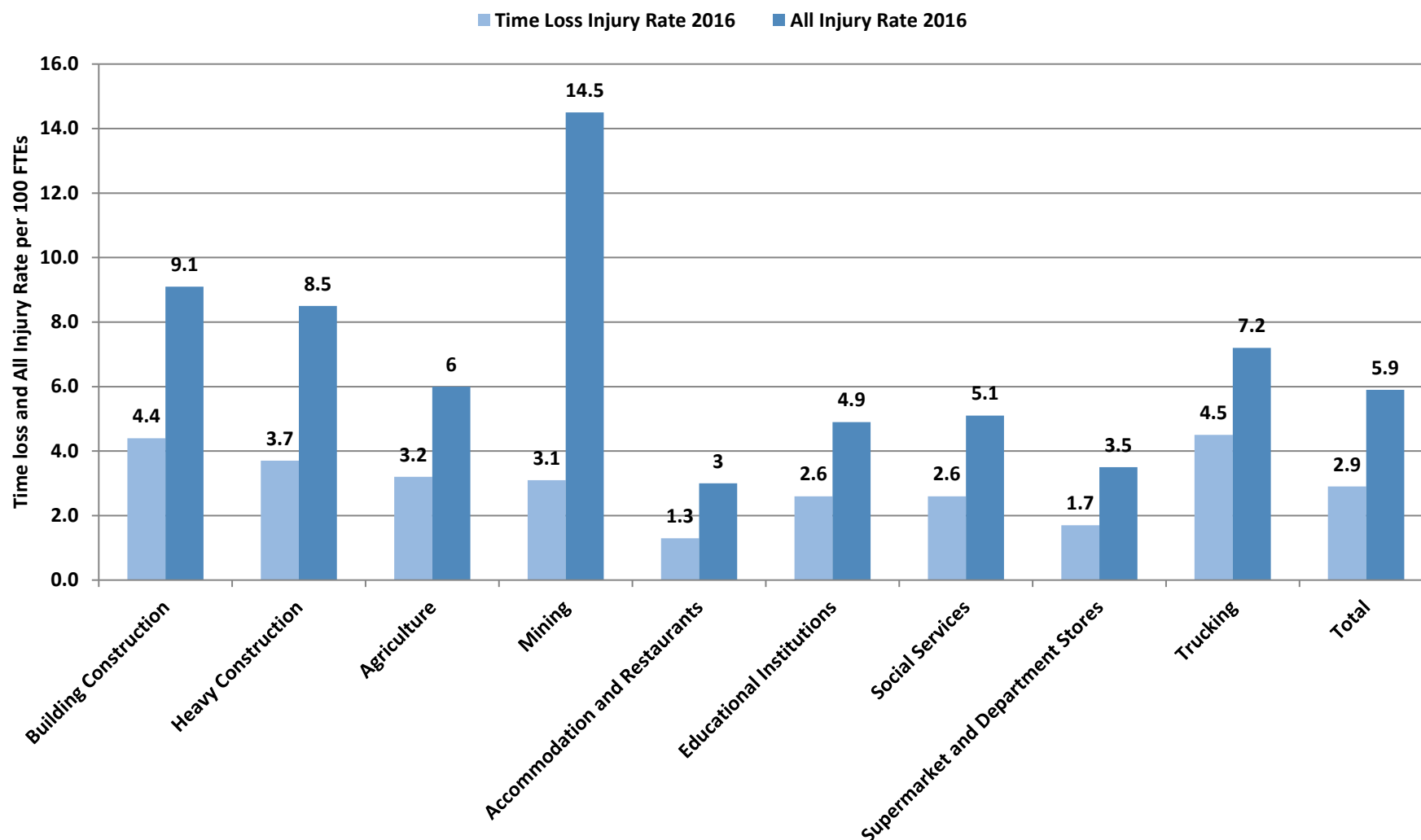


<sup>9</sup> Extension of coverage in 2009 has impacted the trends in injuries and injury rates in the optional, service, trade and forestry and agriculture sectors, so care should be taken in interpreting trends.

<sup>10</sup> Estimates of full-time equivalent workers are based on Statistics Canada average weekly earnings and WCB payroll information. Starting in 2012, the WCB adopted the average weekly earnings series based on the 2012 North American Industry Classification System (NAICS) instead of NAICS 2007. The previous years' injury rates have not been restated.



Figure 10 - All Injury Rate<sup>11</sup> and Time Loss Injury Rate, Other Industry Sub-Sectors<sup>12</sup>, 2016



<sup>11</sup> Estimates of full-time equivalent workers are based on Statistics Canada average weekly earnings and WCB payroll information. Starting in 2012, the WCB adopted the average weekly earnings series based on the 2012 North American Industry Classification System (NAICS) instead of NAICS 2007. The previous years' injury rates have not been restated.

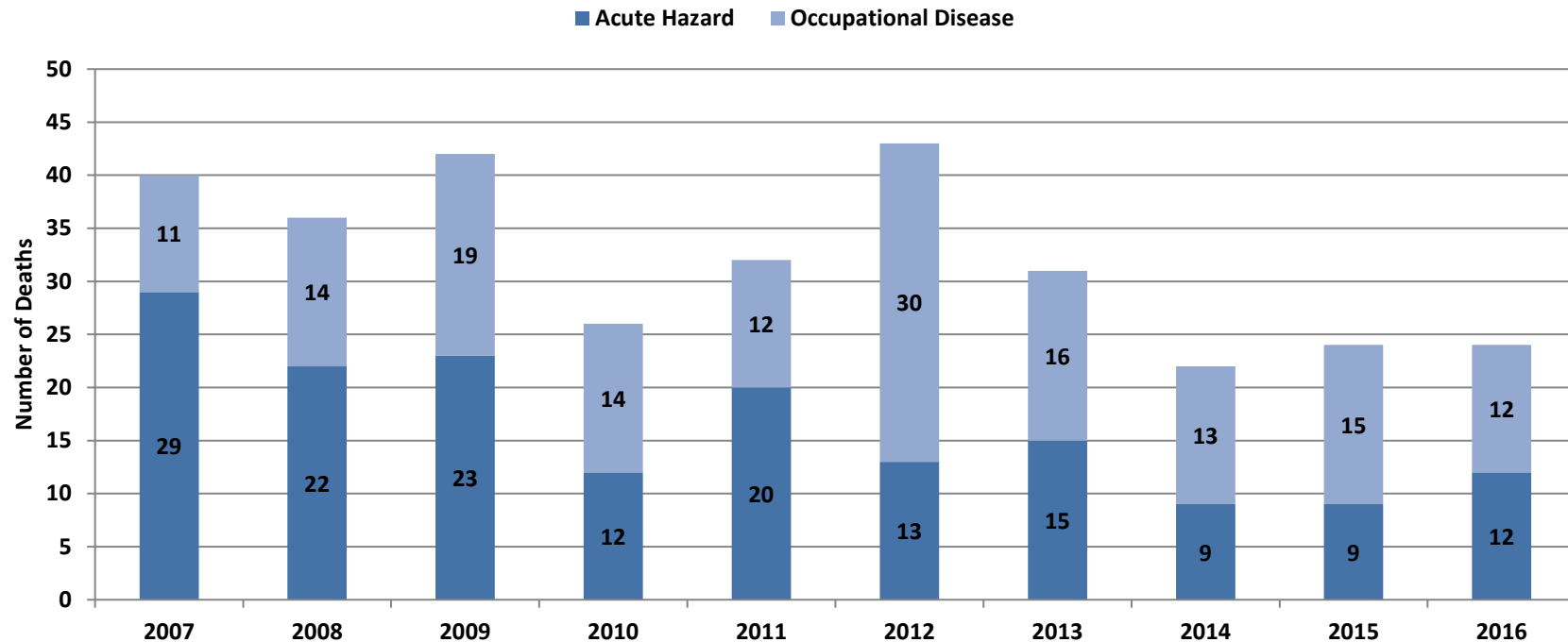
<sup>12</sup> Extension of coverage in 2009 has impacted the trends in injuries and injury rates in the optional, service, trade and forestry and agriculture sectors, so care should be taken in interpreting trends.



## 2.0 WORKPLACE FATALITIES<sup>13</sup>

### 2.1 Acute-Hazard<sup>14</sup> and Occupational Disease<sup>15</sup> Fatalities

Figure 11 - Acute-Hazard and Occupational Disease Fatalities, 2007 to 2016



<sup>13</sup> Fatality reporting method has changed starting in 2016 to be grouped by year of death. For all prior years, fatalities were grouped by year of acceptance.

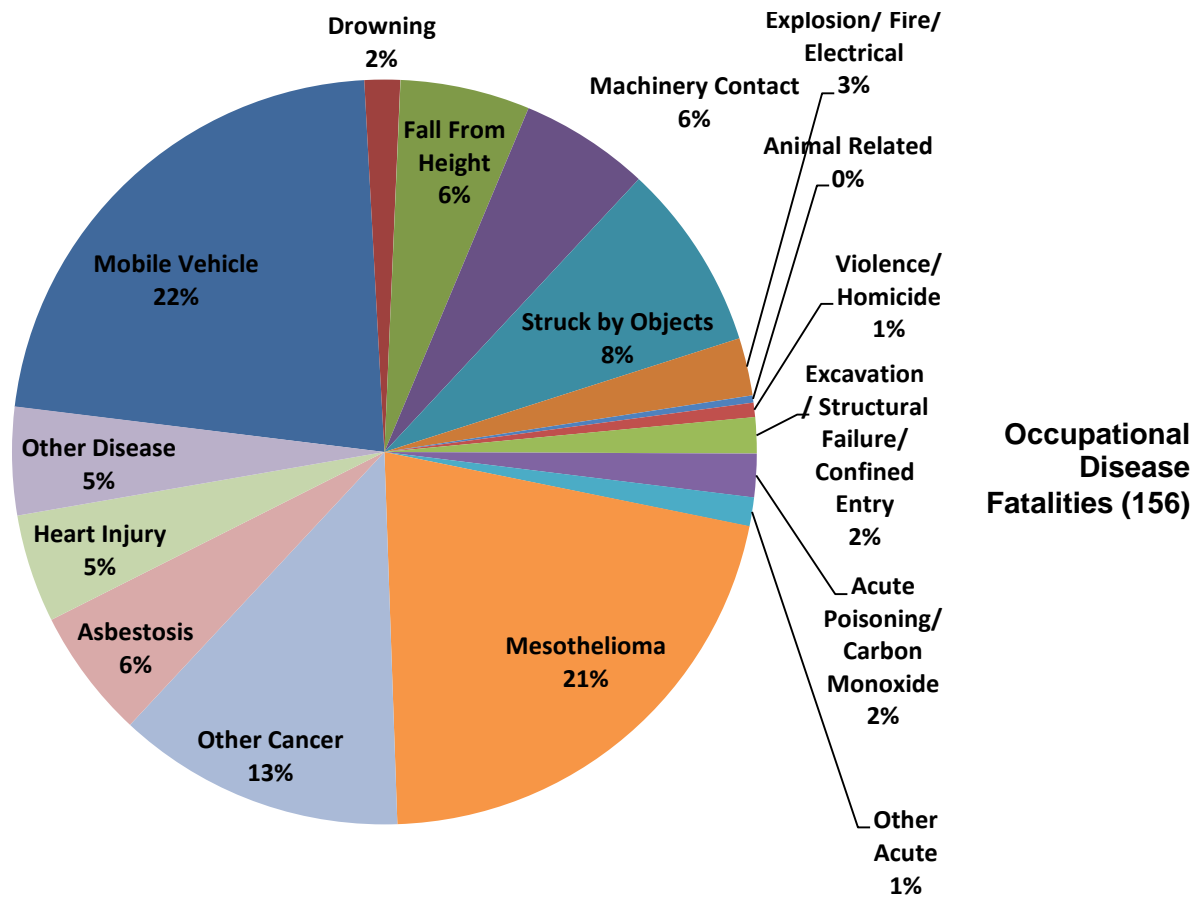
<sup>14</sup> Note that acute hazard fatalities are counted in the year of death for both covered and uncovered workplaces for 2016. For all prior years, they are counted by year of death for uncovered and year of acceptance for covered workplaces. An acute-hazard exposure death is a work-related fatality that occurs when a worker is injured or exposed to a significant amount of a hazardous agent. In such cases, the worker dies immediately or soon after the exposure. This category includes such deaths as falls from height, drowning and highway crashes and excludes deaths due to infectious agents. Acute-hazard fatalities include fatalities accepted by the WCB, and those identified as work-related by the Chief Medical Examiner's Office, the RCMP and the Workplace Safety and Health Division.

<sup>15</sup> An occupational disease death is a work-related fatality that occurs when a worker develops a disease or illness as the result of a long-term exposure to a hazardous substance or contact with a disease-causing agent. WCB tracks only accepted fatalities for this categories. For 2016, fatalities are reported by year of death; all prior years are counted by year of acceptance.



Figure 12 - Acute Hazard and Occupational Disease Fatalities, 2007 to 2016 by Cause

Acute-Hazard  
Fatalities  
(164)

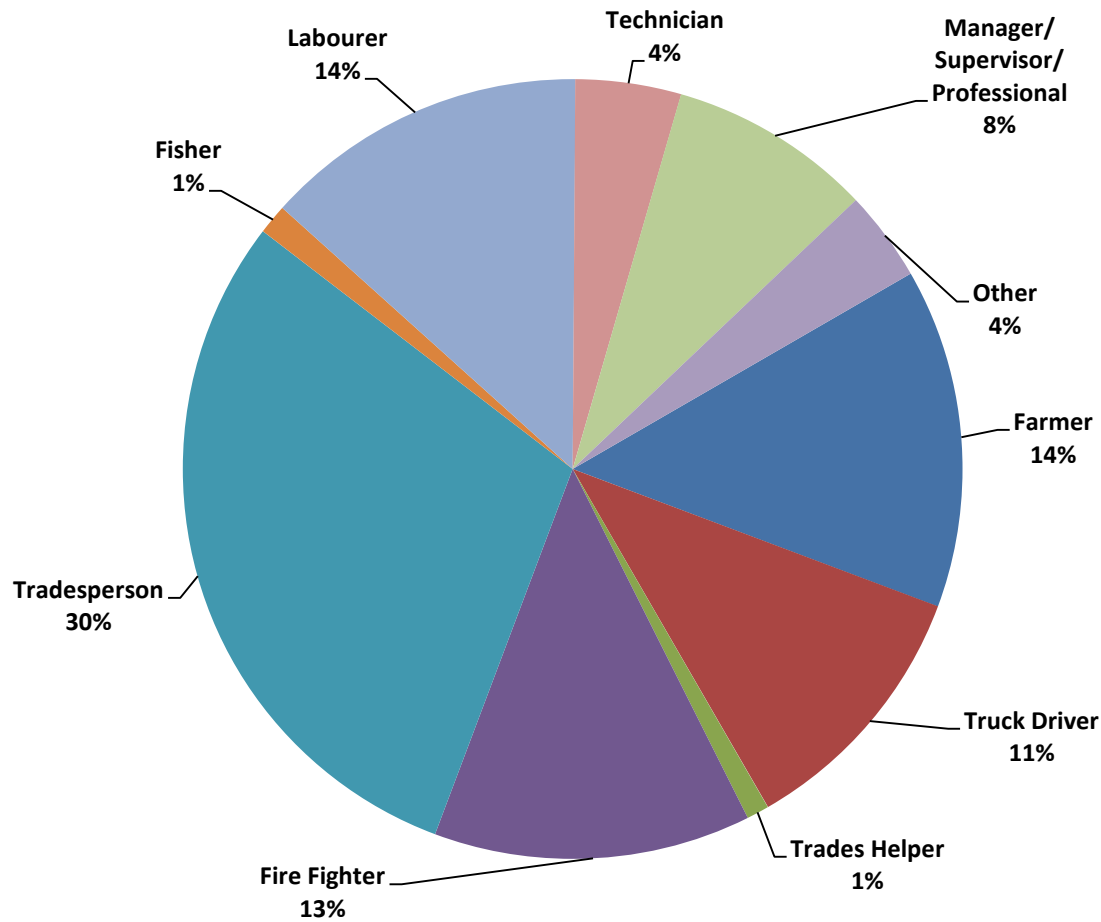


Occupational  
Disease  
Fatalities (156)

Category	#
Mobile Vehicle	71
Drowning	5
Fall From Height	18
Machinery Contact	18
Struck by Objects	26
Explosion/ Fire/ Electrical	8
Animal Related	1
Violence/Homicide	2
Excavation/Structural Failure/Confined Entry	5
Acute Poisoning/Carbon Monoxide	6
Other Acute	4
Mesothelioma	68
Other Cancer	40
Asbestosis	18
Heart Injury	15
Other Disease	15
<b>Total</b>	<b>320</b>



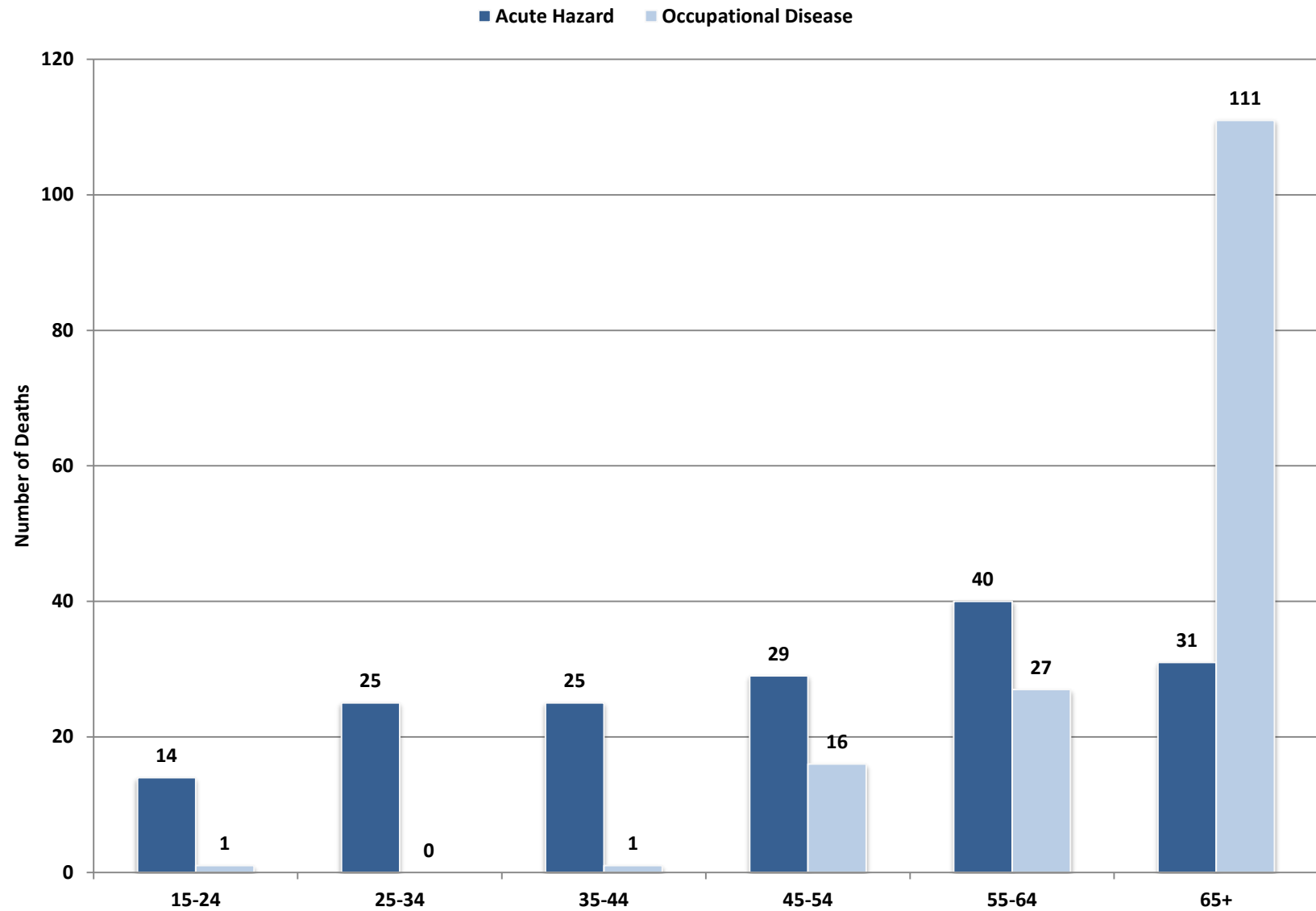
Figure 13 - Acute-Hazard and Occupational Disease Fatalities by Occupation, 2007 to 2016



Category	#
Farmer	45
Truck Driver	35
Trades Helper	3
Fire Fighter	42
Tradesperson	95
Fisher	4
Labourer	43
Technician	14
Manager/Supervisor/Professional	27
Other	12
<b>Total</b>	<b>320</b>



Figure 14 - Distribution of Acute-Hazard and Occupational Disease Fatalities by Age, 2007 to 2016



## 2.2 Acute-Hazard Fatalities

Table 4 - Acute-Hazard Fatalities, 2016

Month of Death	Industry	Circumstances	Occupation
April	Service	Mobile Vehicle	Skilled Labourer
May	Agriculture	Mobile Vehicle	Farmer
May	Manufacturing	Struck by Objects	Tradesperson
May	Agriculture	Mobile Vehicle	Farmer
May	Transportation	Mobile Vehicle	Tradesperson
July	Agriculture	Explosion/Fire/Electrical	Farmer
July	Trade	Fall From Height	Manager, Supervisor, Professional
July	Service	Fall From Height	Tradesperson
July	Transportation	Mobile Vehicle	Other
November	Agriculture	Mobile Vehicle	Farmer
December	Service	Carbon monoxide/Hydrogen Sulphide/Asphyxiation	Manager, Supervisor, Professional
December	Construction	Fall from Height	Tradesperson



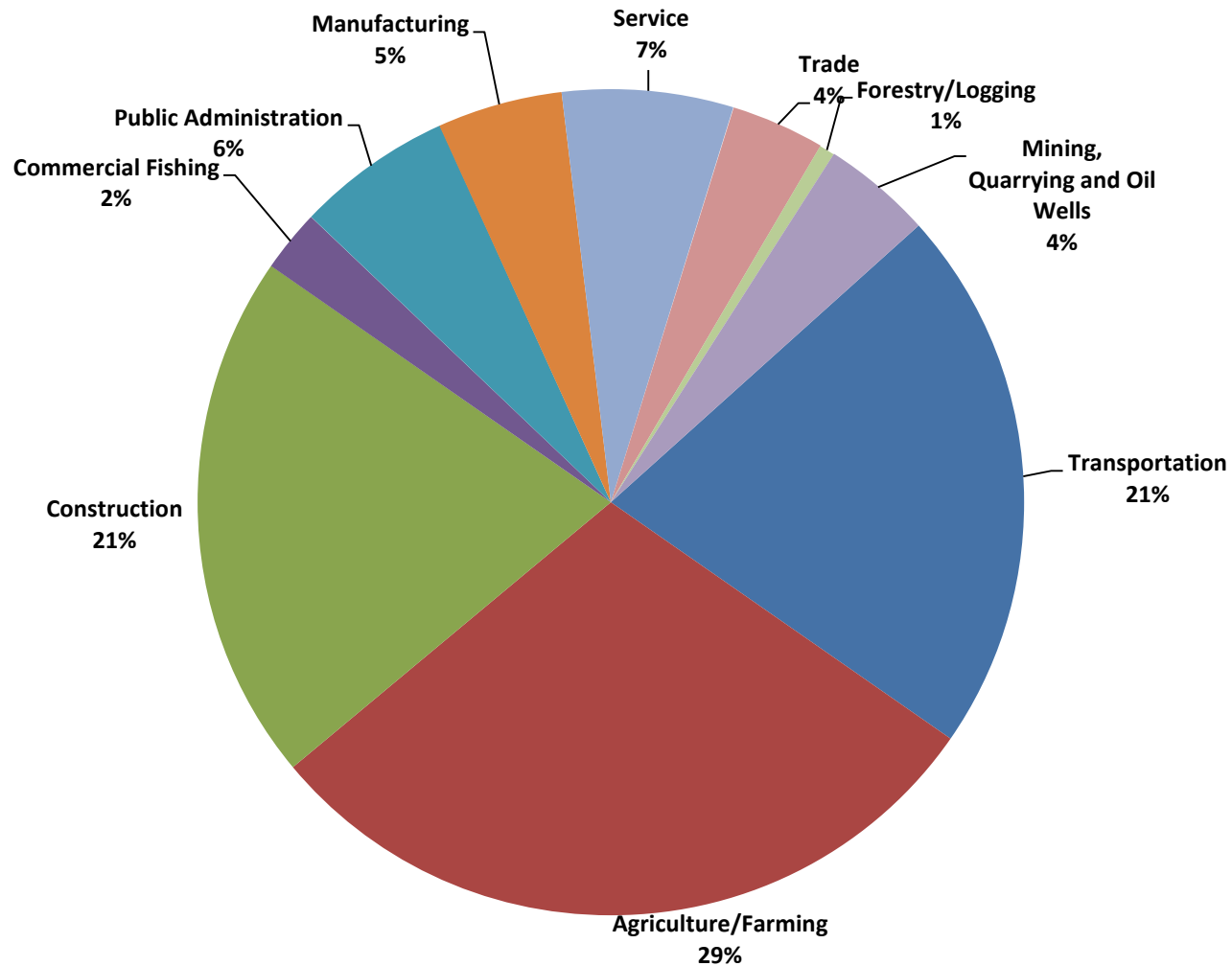
**Table 5 - Acute-Hazard Exposure Fatalities by Industry, 2007 to 2016**

<b>Sector</b>	<b>2007</b>	<b>2008</b>	<b>2009</b>	<b>2010</b>	<b>2011</b>	<b>2012</b>	<b>2013</b>	<b>2014</b>	<b>2015</b>	<b>2016</b>
<b>Agriculture</b>	6	5	9	7	6	3	3	4	1	4
<b>Construction</b>	8	4	5	1	8	-	3	1	3	1
<b>Fishing</b>	-	-	-	-	2	2	-	-	-	-
<b>Forestry</b>	1	-	-	-	-	-	-	-	-	-
<b>Manufacturing</b>	-	3	1	-	-	2	-	-	1	1
<b>Mining</b>	-	-	2	2	-	1	-	2	-	-
<b>Public Administration (includes federal agencies)</b>	6	1	-	1	-	-	1	-	1	-
<b>Service</b>	-	2	1	-	1	2	1	-	1	3
<b>Trade</b>	-	3	-	-	-	1	-	1	-	1
<b>Transportation (includes inter-provincial trucking and rail and air transport)</b>	8	4	5	1	3	2	7	1	2	2
<b>Total</b>	<b>29</b>	<b>22</b>	<b>23</b>	<b>12</b>	<b>20</b>	<b>13</b>	<b>15</b>	<b>9</b>	<b>9</b>	<b>12</b>





Figure 15 - Acute-Hazard Fatalities by WCB Industry Sectors, 2007 to 2016



Category	#
Transportation	35
Agriculture/Farming	48
Construction	34
Commercial Fishing	4
Public Administration	10
Manufacturing	8
Service	11
Trade	6
Forestry/Logging	1
Mining, Quarrying and Oil Wells	7
<b>Total</b>	<b>164</b>



## 2.3 Occupational Disease Fatalities

Table 6 - Occupational Disease Fatalities Accepted by the WCB, 2007 to 2016<sup>16</sup>

Disease Conditions	2007	2008	2009	2010	2011	2012	2013	2014	2015	2016
Asbestosis	-	3	4	-	1	4	2	-	2	2
Mesothelioma	2	4	6	9	6	14	7	7	7	6
Other Cancers	3	3	5	3	3	10	2	4	4	3
Heart Injury	3	2	2	-	2	1	2	1	1	1
Other Disease	3	2	2	2	-	1	3	1	1	-
<b>Total</b>	<b>11</b>	<b>14</b>	<b>19</b>	<b>14</b>	<b>12</b>	<b>30</b>	<b>16</b>	<b>13</b>	<b>15</b>	<b>12</b>

<sup>16</sup>For 2016, Occupational Disease Fatalities are counted by year of death; all prior years are counted by year of acceptance.



**Table 7 - Occupational Disease Fatalities, 2016**

Month of Death	Industry	What Happened - Disease	Occupation
January	Manufacturing	Other cancer	Technician
January	Public Administration	Mesothelioma	Tradesperson
March	Construction	Mesothelioma	Tradesperson
March	Transportation	Asbestosis	Skilled Labourer
April	Service	Asbestosis	Tradesperson
May	Construction	Mesothelioma	Tradesperson
June	Service	Heart Injury	Skilled Labourer
June	Construction	Mesothelioma	Tradesperson
July	Public Administration	Other Cancer	Fire Fighter
August	Public Administration	Other Cancer	Fire Fighter
October	Construction	Mesothelioma	Tradesperson
November	Service	Mesothelioma	Manager, Supervisor, Professional



### 3.0 WORKPLACE INJURY AND ILLNESS ANALYSIS

#### 3.1 Time Loss and No Time Loss Injuries

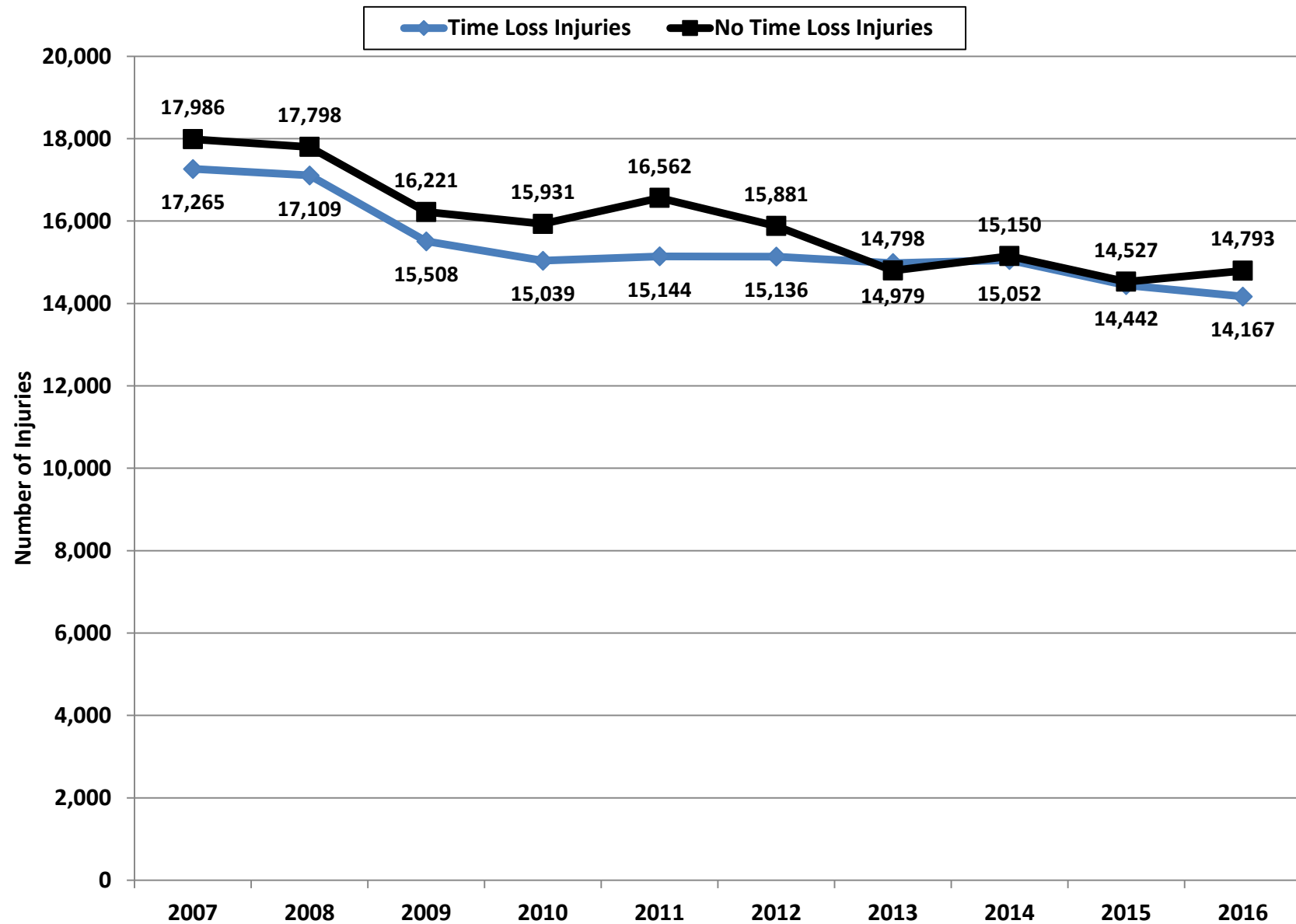
Table 8 - Notified and Accepted Time Loss<sup>17</sup> and No Time Loss Injuries, 2007 to 2016

Type of Injury	2007	2008	2009	2010	2011	2012	2013	2014	2015	2016
Time Loss Injuries	17,265	17,109	15,508	15,039	15,144	15,136	14,979	15,052	14,442	14,167
No Time Loss Injuries	17,986	17,798	16,221	15,931	16,562	15,881	14,798	15,150	14,527	14,793
Total All Injuries	35,251	34,907	31,729	30,970	31,706	31,017	29,777	30,202	28,969	28,960

<sup>17</sup> The data used to calculate the annual injuries includes injuries where the WCB is notified of the claim and it is accepted in the particular year, regardless of the year of injury.



Figure 16 - Trends in Time Loss and No Time Loss Injuries, 2007 to 2016



### 3.2 Accepted Injuries by Age Group

Table 9 - Injuries by Age Group, 2007 to 2016<sup>18</sup>

Age Group	2007	2008	2009	2010	2011	2012	2013	2014	2015	2016
<b>15-24</b>	6,346	6,224	5,247	4,898	5,185	5,224	4,875	4,880	4,534	4,216
<b>25-34</b>	7,552	7,499	6,788	6,794	6,804	6,761	6,496	6,625	6,381	6,482
<b>35-44</b>	8,262	7,916	6,981	6,819	6,846	6,380	6,228	6,287	6,073	5,982
<b>45-54</b>	8,283	8,328	7,829	7,590	7,647	7,242	6,949	6,809	6,558	6,486
<b>55+</b>	4,285	4,451	4,498	4,446	4,821	5,007	4,886	5,102	4,979	5,468
<b>Not Coded</b>	523	489	386	423	403	403	343	499	444	326
<b>Total</b>	<b>35,251</b>	<b>34,907</b>	<b>31,729</b>	<b>30,970</b>	<b>31,706</b>	<b>31,017</b>	<b>29,777</b>	<b>30,202</b>	<b>28,969</b>	<b>28,960</b>

<sup>18</sup> Note that in 2010 the age group distributions vary slightly from those reported in previous years. This is because a slightly different method is being used to calculate age than in previous years using a built-in age calculation function in SPSS.



Figure 17 - Proportion of All Injuries and Employment by Age Group, 2016

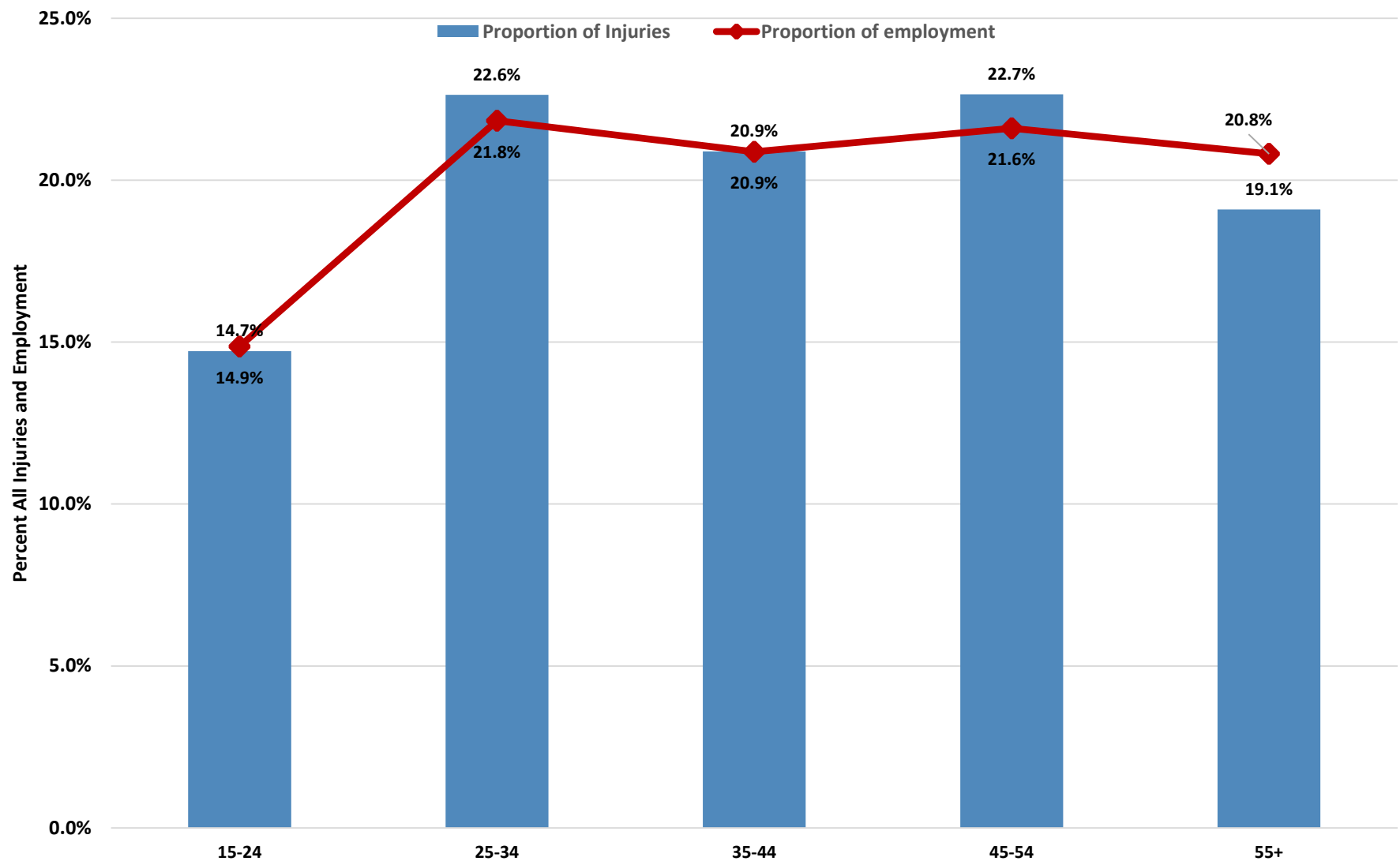
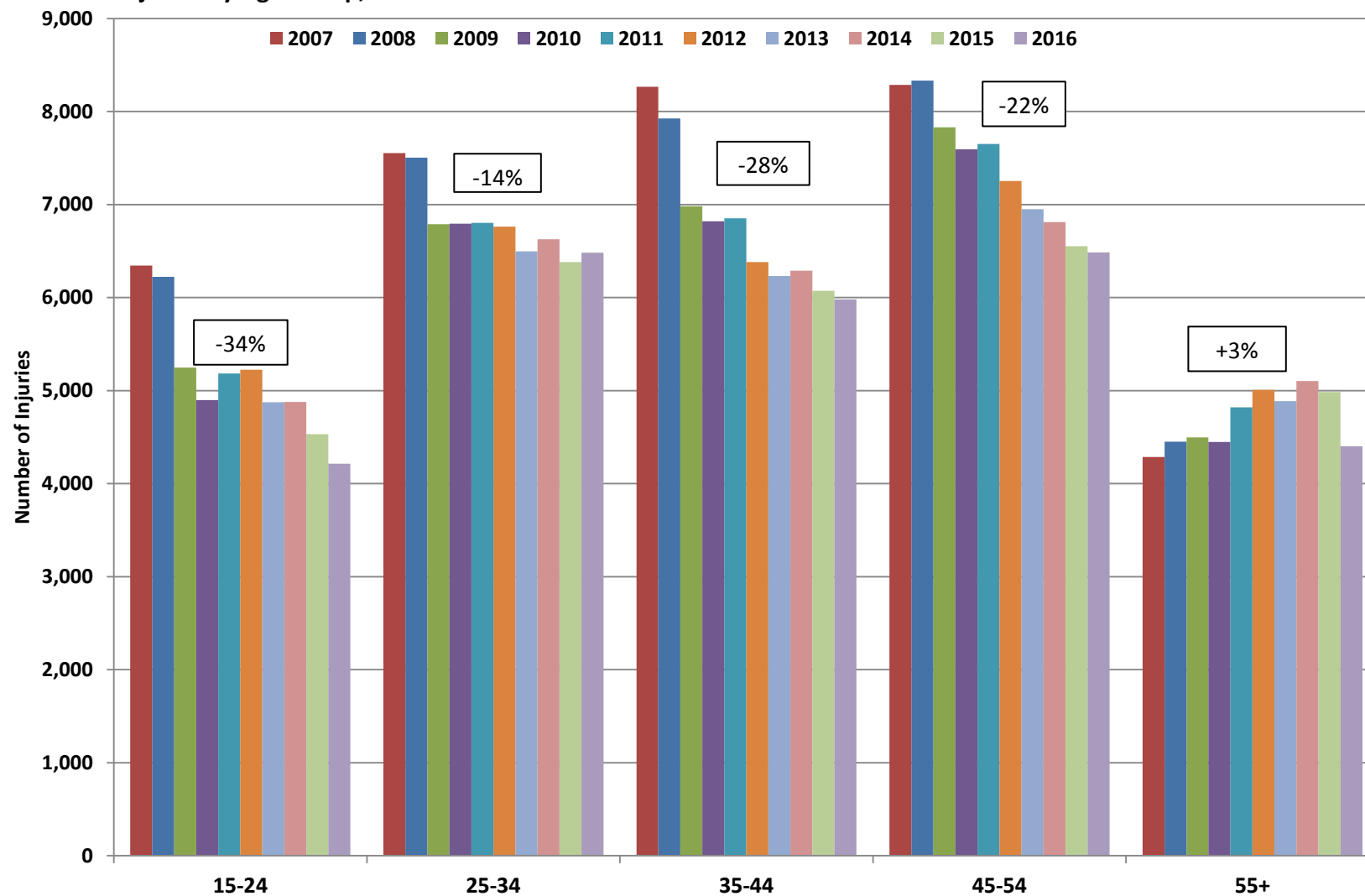


Figure 18 - All Injuries by Age Group, 2007 to 2016





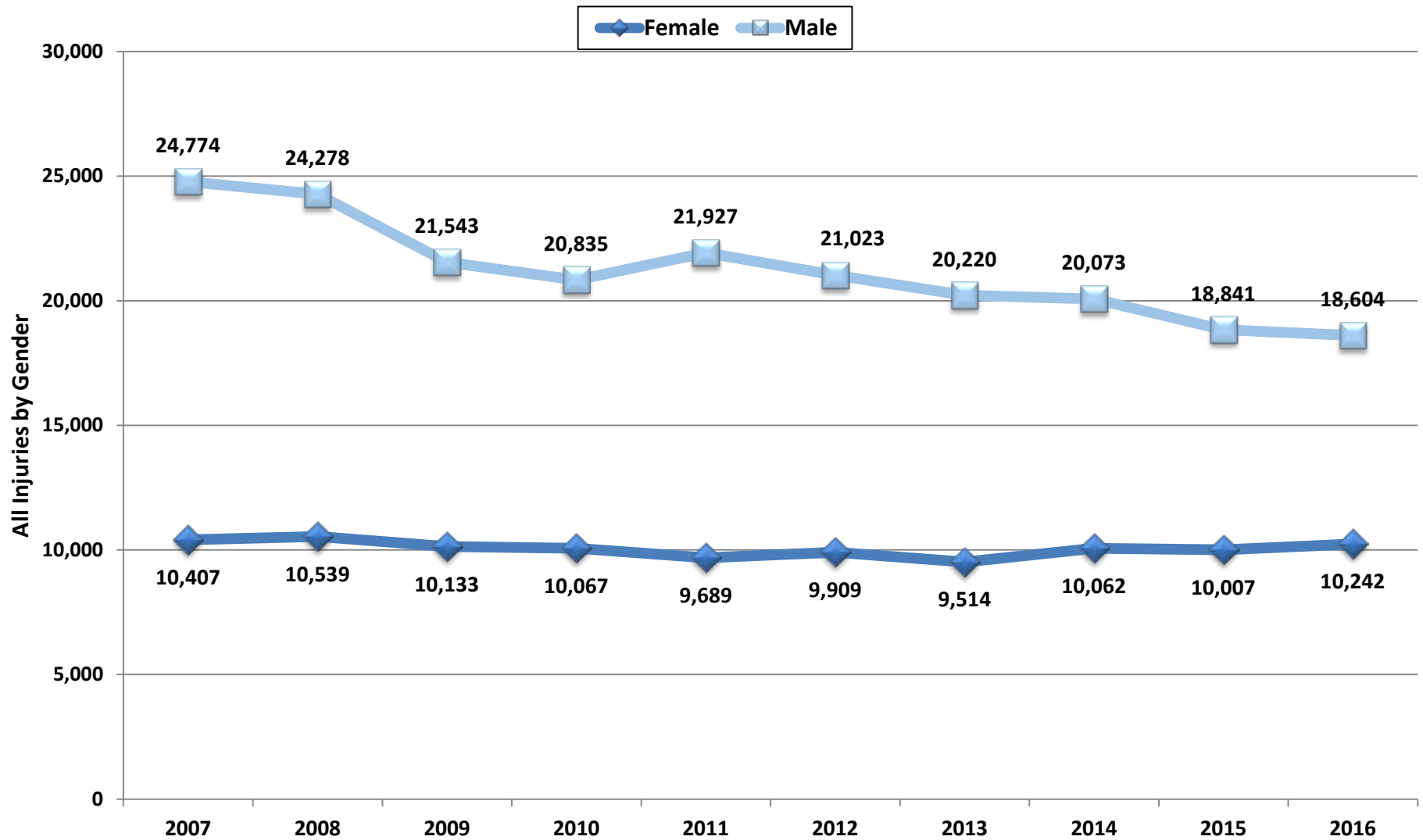
### 3.3 Accepted Injuries by Gender

Table 10 - Injuries by Gender, 2007 to 2016

Gender	2007	2008	2009	2010	2011	2012	2013	2014	2015	2016
Female	10,407	10,539	10,133	10,067	9,689	9,909	9,514	10,062	10,007	10,242
Male	24,774	24,278	21,543	20,835	21,927	21,023	20,220	20,073	18,841	18,604
Gender Unspecified	71	91	54	69	91	86	43	67	121	112
<b>Total</b>	<b>35,251</b>	<b>34,907</b>	<b>31,729</b>	<b>30,970</b>	<b>31,706</b>	<b>31,017</b>	<b>29,777</b>	<b>30,202</b>	<b>28,969</b>	<b>28,960</b>
<b>Percentage of Female Injuries</b>	<b>29.5%</b>	<b>30.2%</b>	<b>31.9%</b>	<b>32.6%</b>	<b>30.6%</b>	<b>29.2%</b>	<b>32.0%</b>	<b>33.3%</b>	<b>34.5%</b>	<b>35.4%</b>
<b>Percentage of Male Injuries</b>	<b>70.5%</b>	<b>69.8%</b>	<b>68.1%</b>	<b>67.4%</b>	<b>69.4%</b>	<b>70.8%</b>	<b>68.0%</b>	<b>66.7%</b>	<b>65.0%</b>	<b>64.6%</b>



Figure 19 - Injuries by Gender, 2007 to 2016



### 3.4 Injuries by Industry Sector

**Table 11 - Time Loss Injuries by WCB Industry Sectors and Selected Sub-Sectors**

WCB Industry Sectors and Selected Sub-Sectors	2007	2008	2009	2010	2011	2012	2013	2014	2015	2016
<b>Construction</b>	<b>2,035</b>	<b>2,115</b>	<b>1,940</b>	<b>1,844</b>	<b>2,035</b>	<b>2,063</b>	<b>2,017</b>	<b>1,986</b>	<b>1,911</b>	<b>1,717</b>
Building Construction	1,689	1,817	1,629	1,564	1,697	1,752	1,695	1,624	1,543	1,430
Heavy Construction	346	298	311	280	338	311	322	362	368	287
<b>Healthcare</b>	<b>2,531</b>	<b>2,712</b>	<b>2,613</b>	<b>2,715</b>	<b>2,463</b>	<b>2,532</b>	<b>2,503</b>	<b>2,512</b>	<b>2,493</b>	<b>2,694</b>
<b>Manufacturing</b>	<b>4,274</b>	<b>3,944</b>	<b>3,071</b>	<b>2,680</b>	<b>2,919</b>	<b>2,794</b>	<b>2,621</b>	<b>2,578</b>	<b>2,388</b>	<b>2,097</b>
Agriculture Manufacturing	85	93	80	60	67	80	81	106	80	81
Aircraft Manufacturing and Repair	141	149	104	121	98	109	120	113	79	75
Clothing/ Textile Manufacturing	89	88	52	48	46	53	33	40	49	40
Construction Manufacturing	137	121	96	88	95	94	83	92	94	91
Food & Beverage Processing	285	254	248	212	240	193	151	174	167	185
Heavy Metal Working	1,415	1,450	1,015	888	1,148	1,112	985	906	753	663
Light Manufacturing	280	229	195	184	169	182	164	156	154	113
Manufacturing Chemicals/Paint	31	24	27	25	24	20	21	29	26	16
Manufacturing Electronics	43	35	28	27	29	16	31	15	23	21
Manufacturing Medication	35	45	49	36	58	57	30	50	37	32
Meat Processing	246	163	171	138	131	121	179	164	125	136
Other Manufacturing	55	35	41	54	37	47	42	28	41	31
Paper & Printing	186	183	172	150	155	115	98	116	127	100
Plastic Manufacturing	228	243	166	171	151	118	111	99	119	75
Vehicle Manufacturing	347	296	298	204	198	215	205	195	191	156
Wood & Millwork	671	536	329	274	273	262	287	295	323	282
<b>Natural Resources</b>	<b>302</b>	<b>315</b>	<b>405</b>	<b>411</b>	<b>449</b>	<b>462</b>	<b>384</b>	<b>410</b>	<b>379</b>	<b>400</b>
Agriculture	114	119	284	260	268	279	229	235	220	251
Commercial Fishing	1	1	1		2	1		1	2	-
Forestry	27	16	16	12	18	16	7	8	7	5
Mining	115	123	78	89	94	109	96	110	106	122
Other Mining	45	56	26	50	67	57	52	56	44	22
<b>Public Administration</b>	<b>1,512</b>	<b>1,564</b>	<b>1,455</b>	<b>1,531</b>	<b>1,649</b>	<b>1,615</b>	<b>1,631</b>	<b>1,574</b>	<b>1,516</b>	<b>1,558</b>



<b>WCB Industry Sectors and Selected Sub-Sectors</b>	<b>2007</b>	<b>2008</b>	<b>2009</b>	<b>2010</b>	<b>2011</b>	<b>2012</b>	<b>2013</b>	<b>2014</b>	<b>2015</b>	<b>2016</b>
<b>Service</b>	<b>1,978</b>	<b>1,999</b>	<b>2,021</b>	<b>1,961</b>	<b>1,889</b>	<b>1,956</b>	<b>2,096</b>	<b>2,095</b>	<b>2,136</b>	<b>2,236</b>
Accommodation and Restaurants	709	736	714	608	571	617	658	681	608	610
Business Services	247	234	205	203	243	202	222	197	194	178
Educational Institutions	402	382	417	496	405	454	455	487	498	567
Facilities Services	207	250	227	237	201	202	216	207	239	226
Other Service	70	67	84	63	71	82	80	94	107	99
Personal Services	235	201	259	230	246	233	265	251	251	275
Social Services	108	129	115	124	152	166	200	178	239	281
<b>Trade</b>	<b>2,665</b>	<b>2,655</b>	<b>2,354</b>	<b>2,335</b>	<b>2,141</b>	<b>2,142</b>	<b>2,145</b>	<b>2,301</b>	<b>2,159</b>	<b>2,066</b>
Automotive Related	761	776	674	617	587	580	531	608	610	610
Other Trade	166	172	172	168	165	148	157	191	192	169
Supermarket & Department Stores	1,377	1,358	1,181	1,176	1,092	1,107	1,163	1,125	1,030	1,010
Wholesaling	361	349	327	374	297	307	294	377	327	291
<b>Transportation</b>	<b>1,968</b>	<b>1,804</b>	<b>1,649</b>	<b>1,562</b>	<b>1,598</b>	<b>1,567</b>	<b>1,578</b>	<b>1,596</b>	<b>1,457</b>	<b>1,396</b>
Aviation	139	141	123	135	115	96	97	102	113	99
Other Transportation	186	164	147	129	143	130	121	137	124	104
Postal Service & Courier	273	295	243	238	303	340	335	312	250	243
Railway	141	109	98	103	92	81	101	105	77	75
Trucking	917	803	746	684	703	690	716	728	663	658
Utilities	234	203	211	192	185	191	164	162	171	150
Warehousing	78	89	81	81	57	39	44	50	59	67
<b>Sector Missing</b>	<b>-</b>	<b>1</b>	<b>-</b>	<b>-</b>	<b>1</b>	<b>5</b>	<b>4</b>	<b>-</b>	<b>3</b>	<b>3</b>
<b>Total</b>	<b>17,265</b>	<b>17,109</b>	<b>15,508</b>	<b>15,039</b>	<b>15,144</b>	<b>15,136</b>	<b>14,979</b>	<b>15,052</b>	<b>14,442</b>	<b>14,167</b>



**Table 12 - All Injuries by WCB Industry Sectors and Selected Sub-Sectors**

WCB Industry Sectors and Selected Sub-Sectors	2007	2008	2009	2010	2011	2012	2013	2014	2015	2016
<b>Construction</b>	<b>4,066</b>	<b>4,427</b>	<b>4,046</b>	<b>3,979</b>	<b>4,339</b>	<b>4,269</b>	<b>4,178</b>	<b>3,956</b>	<b>3,734</b>	<b>3,624</b>
Building Construction	3,378	3,716	3,312	3,346	3,652	3,611	3,487	3,234	3,038	2,971
Heavy Construction	688	711	734	633	687	658	691	722	696	653
<b>Healthcare</b>	<b>4,528</b>	<b>4,723</b>	<b>4,705</b>	<b>4,843</b>	<b>4,542</b>	<b>4,601</b>	<b>4,359</b>	<b>4,437</b>	<b>4,484</b>	<b>4,728</b>
<b>Manufacturing</b>	<b>9,460</b>	<b>8,752</b>	<b>6,795</b>	<b>5,986</b>	<b>6,600</b>	<b>6,295</b>	<b>5,722</b>	<b>5,549</b>	<b>5,250</b>	<b>4,789</b>
Agriculture Manufacturing	203	185	176	160	152	154	172	174	143	145
Aircraft Manufacturing and Repair	254	252	195	193	204	201	220	188	157	170
Clothing/ Textile Manufacturing	149	154	96	78	70	90	63	67	86	89
Construction Manufacturing	304	281	210	210	266	234	226	197	207	194
Food & Beverage Processing	529	528	505	397	472	392	339	371	360	395
Heavy Metal Working	3,064	3,021	2,166	1,972	2,577	2,440	2,021	1,999	1,673	1,483
Light Manufacturing	583	493	409	398	374	386	371	341	304	267
Manufacturing Chemicals/Paint	62	58	58	53	54	62	66	83	78	48
Manufacturing Electronics	63	71	51	39	49	41	50	28	49	41
Manufacturing Medication	88	97	85	61	105	96	57	82	68	61
Meat Processing	816	759	721	657	595	584	548	513	494	495
Other Manufacturing	206	162	124	128	98	104	96	83	81	72
Paper & Printing	372	354	325	269	274	249	213	231	255	197
Plastic Manufacturing	447	441	336	345	288	236	207	180	203	151
Vehicle Manufacturing	708	577	537	413	386	425	405	373	369	336
Wood & Millwork	1,612	1,319	801	613	636	601	668	639	723	645
<b>Natural Resources</b>	<b>1,171</b>	<b>1,209</b>	<b>1,229</b>	<b>1,285</b>	<b>1,291</b>	<b>1,366</b>	<b>1,206</b>	<b>1,249</b>	<b>1,166</b>	<b>1,115</b>
Agriculture	212	215	526	506	482	497	417	476	462	472
Commercial Fishing	3	1	1	1	3	1		2	2	-
Forestry	41	31	30	29	29	22	15	18	11	11
Mining	735	771	561	578	545	624	581	600	575	570
Other Mining	180	191	111	171	232	222	193	153	116	62

WCB Industry Sectors and Selected Sub-Sectors	2007	2008	2009	2010	2011	2012	2013	2014	2015	2016
---	------	------	------	------	------	------	------	------	------	------



<b>Public Administration</b>	<b>2,945</b>	<b>2,929</b>	<b>2,766</b>	<b>2,963</b>	<b>3,160</b>	<b>2,975</b>	<b>2,998</b>	<b>2,879</b>	<b>2,740</b>	<b>2,884</b>
<b>Service</b>	<b>4,078</b>	<b>4,177</b>	<b>4,206</b>	<b>4,024</b>	<b>4,009</b>	<b>4,050</b>	<b>4,100</b>	<b>4,396</b>	<b>4,501</b>	<b>4,710</b>
Accommodation and Restaurants	1,528	1,601	1,567	1,327	1,320	1,349	1,336	1,453	1,445	1,390
Business Services	490	451	372	381	422	363	399	391	385	369
Educational Institutions	866	854	851	944	873	865	813	942	982	1,061
Facilities Services	392	487	421	407	385	404	399	450	480	511
Other Service	177	175	206	240	205	225	225	253	254	241
Personal Services	417	343	520	466	478	486	504	474	479	579
Social Services	208	266	269	259	326	358	424	433	476	559
<b>Trade</b>	<b>5,482</b>	<b>5,419</b>	<b>4,854</b>	<b>4,826</b>	<b>4,677</b>	<b>4,521</b>	<b>4,314</b>	<b>4,813</b>	<b>4,465</b>	<b>4,486</b>
Automotive Related	1,535	1,462	1,332	1,222	1,291	1,219	1,089	1,268	1,194	1,208
Other Trade	438	452	435	430	425	356	382	588	590	619
Supermarket & Department Stores	2,840	2,827	2,513	2,539	2,381	2,381	2,324	2,323	2,114	2,102
Wholesaling	669	678	574	635	580	565	519	634	567	557
<b>Transportation</b>	<b>3,512</b>	<b>3,258</b>	<b>3,121</b>	<b>3,057</b>	<b>3,078</b>	<b>2,928</b>	<b>2,883</b>	<b>2,908</b>	<b>2,617</b>	<b>2,609</b>
Aviation	291	284	268	273	278	235	259	282	283	246
Other Transportation	300	303	267	240	245	244	234	245	209	202
Postal Service & Courier	435	449	387	386	453	457	453	438	380	394
Railway	407	330	311	319	313	284	301	264	201	214
Trucking	1,421	1,268	1,205	1,152	1,160	1,123	1,141	1,134	1,046	1,067
Utilities	517	477	506	505	492	445	378	419	385	357
Warehousing	141	147	177	182	137	140	117	126	113	129
<b>Sector Missing</b>	<b>9</b>	<b>13</b>	<b>7</b>	<b>7</b>	<b>10</b>	<b>12</b>	<b>17</b>	<b>15</b>	<b>12</b>	<b>15</b>
<b>Total</b>	<b>35,251</b>	<b>34,907</b>	<b>31,729</b>	<b>30,970</b>	<b>31,706</b>	<b>31,017</b>	<b>29,777</b>	<b>30,202</b>	<b>28,969</b>	<b>28,960</b>



Figure 20 - Proportions of All Injuries and FTE Workers by WCB Industry Sectors, 2016

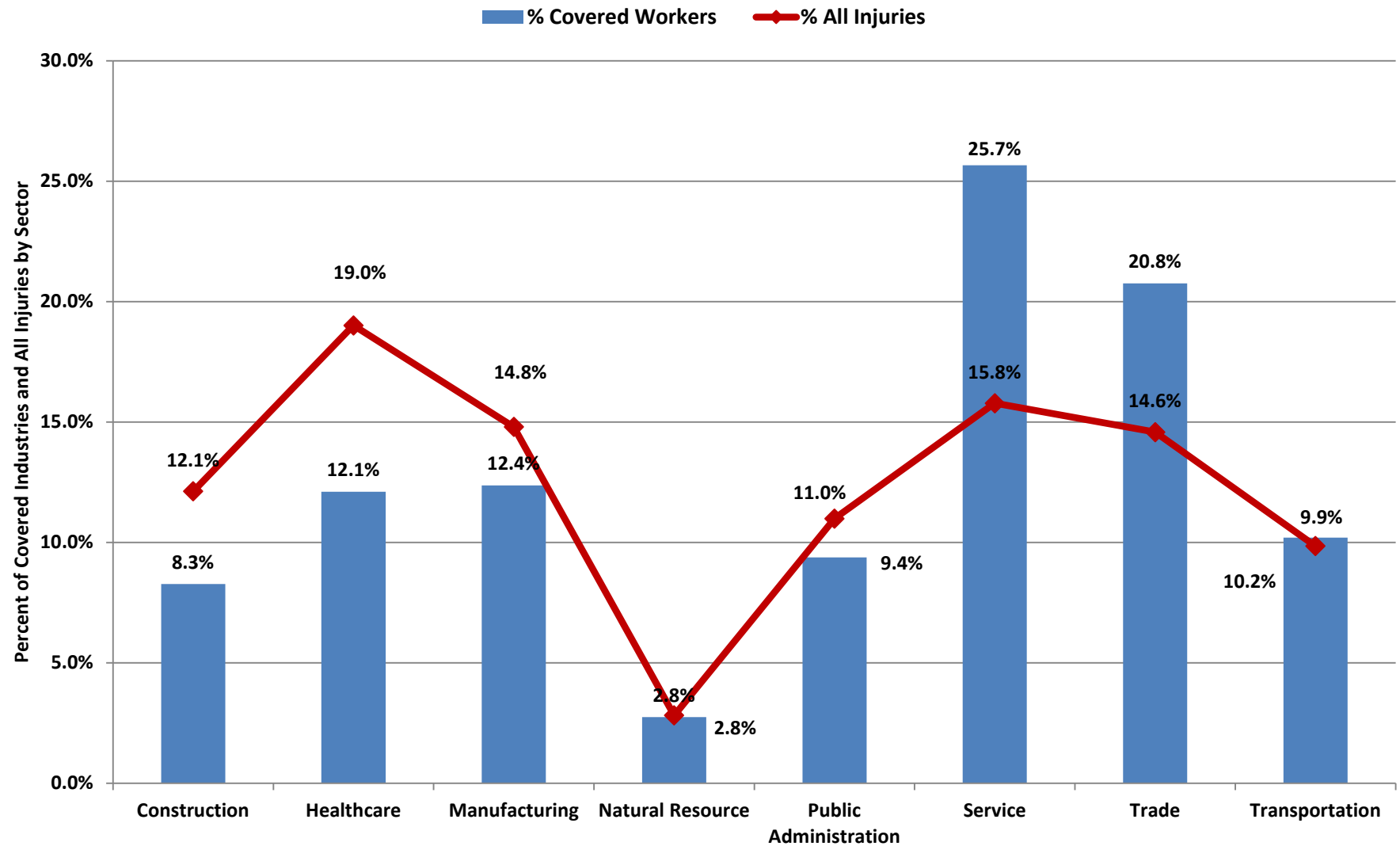


Figure 21 - Time Loss Injury Trends in WCB Occupational Groupings, 2007 to 2016

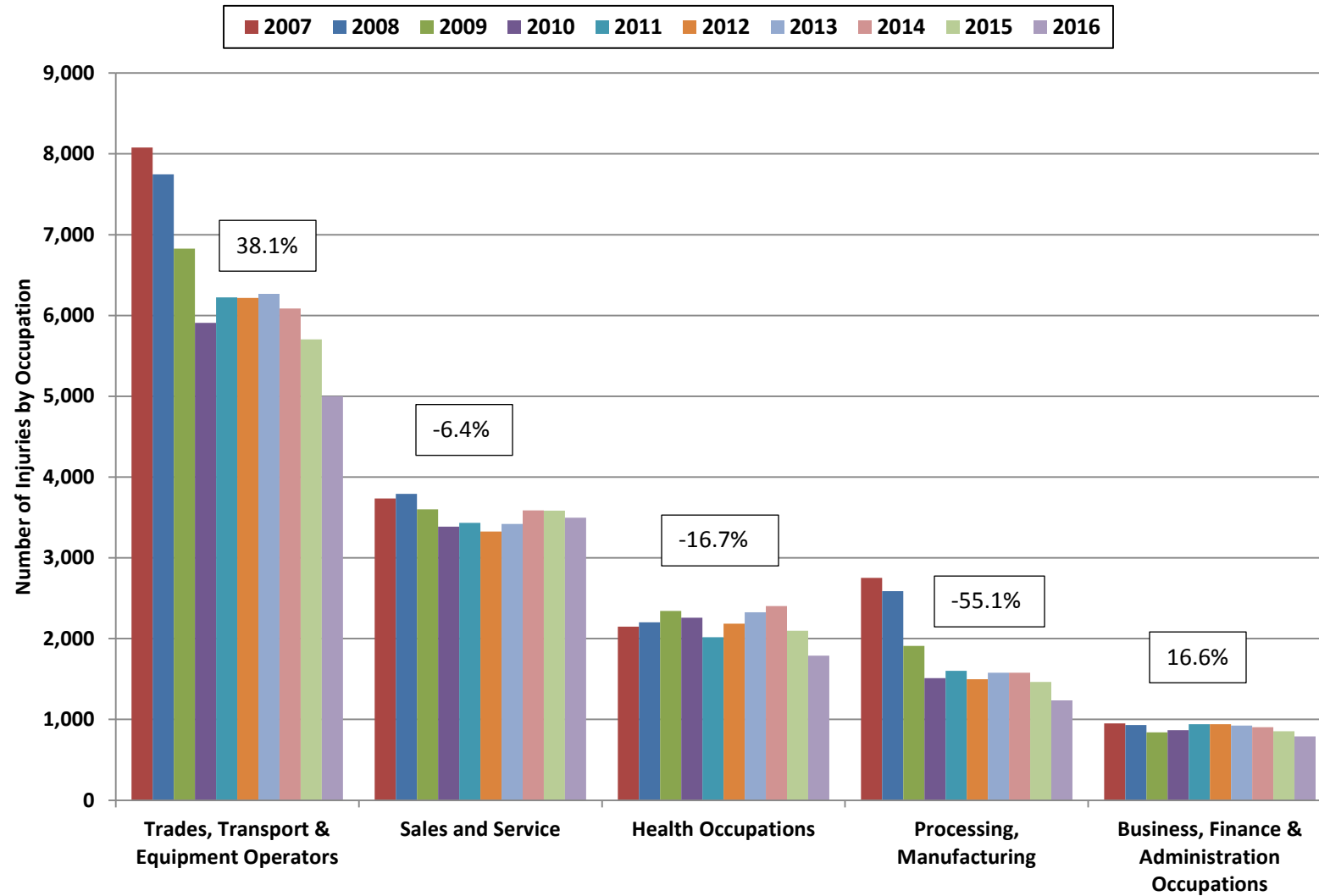
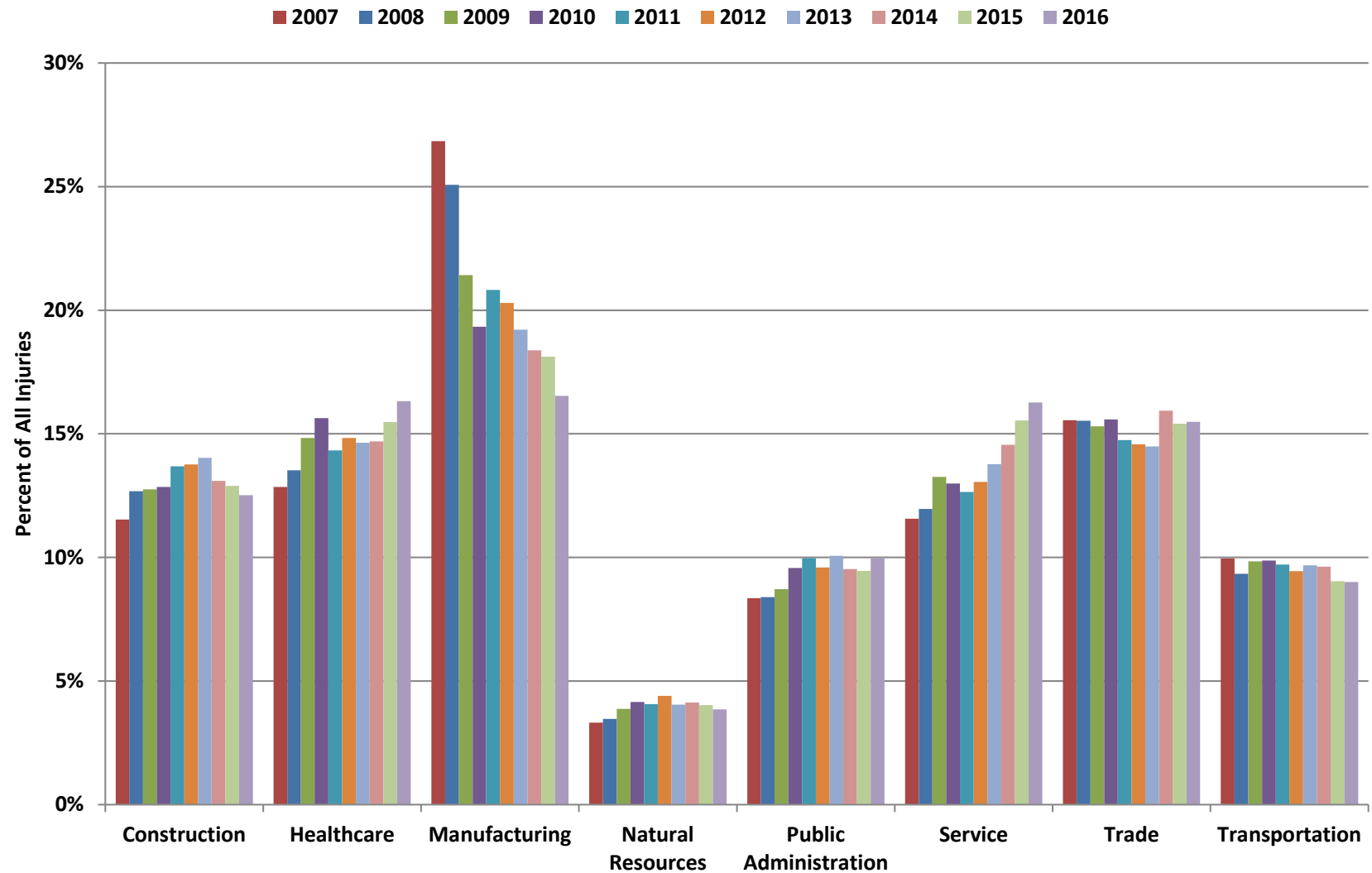




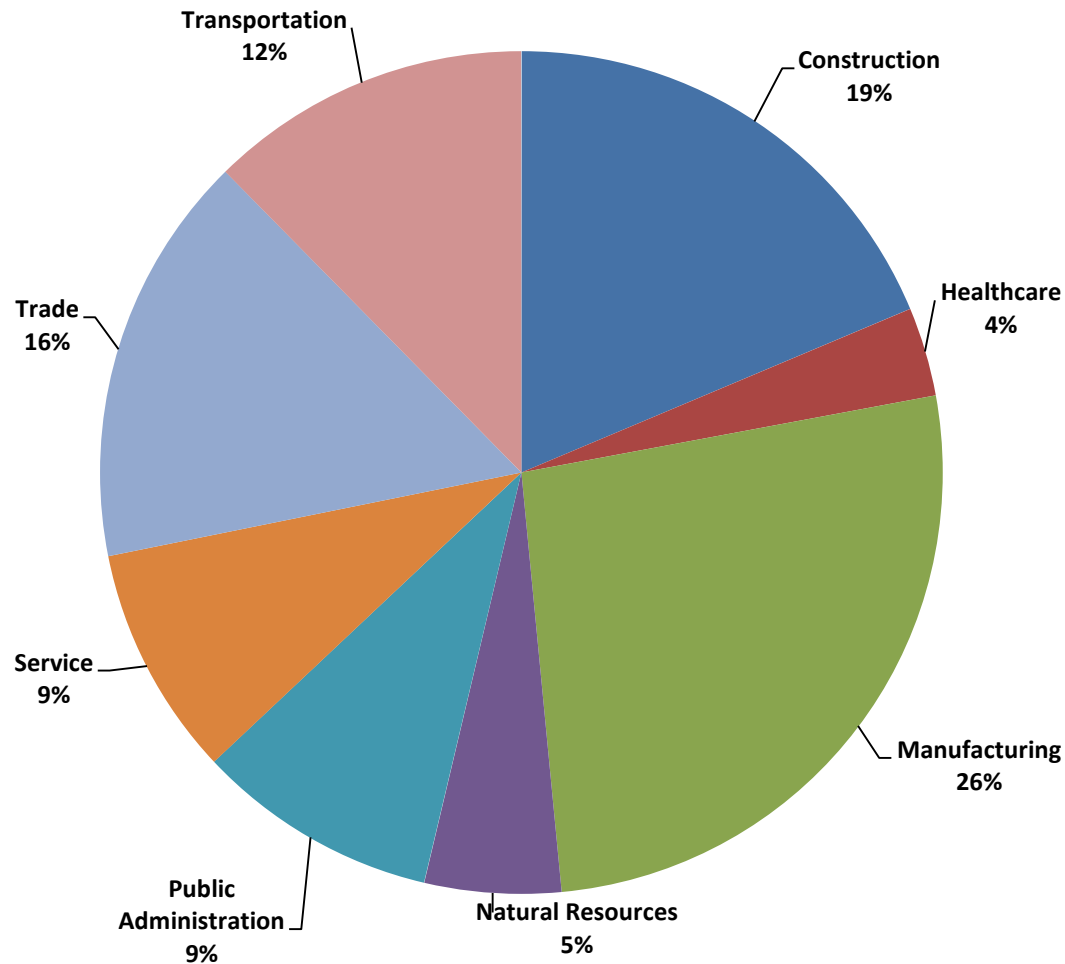
Figure 22 - Percent Distribution of All Injuries by WCB Industry Sectors<sup>19</sup>, 2007 to 2016



<sup>19</sup> Extension of coverage in 2009 has impacted the trends in injuries and injury rates in the service, trade and natural resources sectors, so care should be taken in interpreting trends.



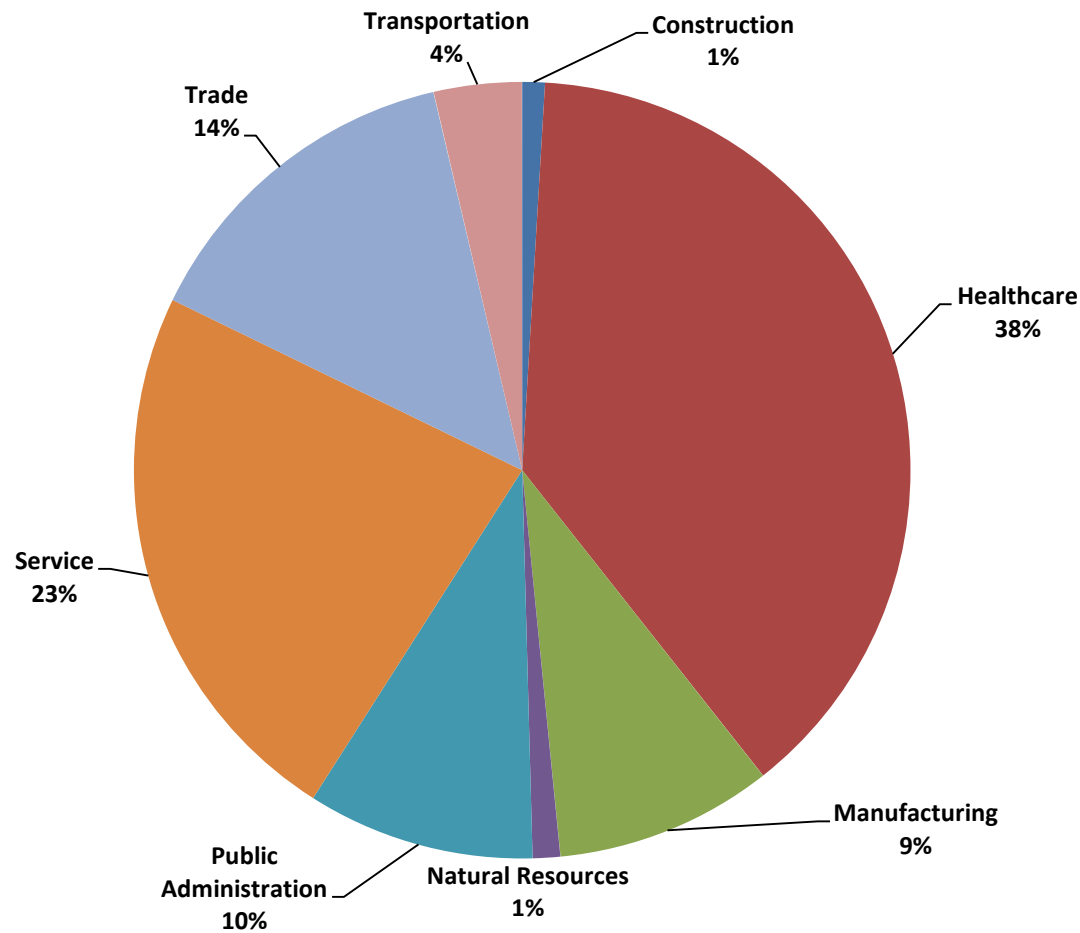
Figure 23 - Male Injuries by WCB Industry Sectors, 2007-2016



Industry Sector	#
Construction	39,540
Healthcare	7,238
Manufacturing	55,977
Natural Resources	11,085
Public Administration	19,652
Service	18,757
Trade	33,515
Transportation	26,215
<b>Total</b>	<b>211,979</b>



Figure 24 - Female Injuries by WCB Industry Sectors, 2007 to 2016



Industry Sector	#
Construction	942
Healthcare	38,637
Manufacturing	9,097
Natural Resources	1,167
Public Administration	9,502
Service	23,299
Trade	14,189
Transportation	3,691
<b>Total</b>	<b>100,524</b>



### 3.5 Occupations of Injured and Ill Workers (Time Loss Injuries Only)

**Table 13 - Injuries by Occupational Groups, 2007 to 2016**

Occupation Group	2007	2008	2009	2010	2011	2012	2013	2014	2015	2016
Trades, Transport & Equipment Operators	7,329	7,193	6,382	5,620	5,814	5,824	5,661	5,577	5,338	5,000
Sales and Service	3,468	3,540	3,378	3,270	3,204	3,099	3,148	3,309	3,370	3,496
Health Occupations	1,838	1,936	1,971	2,018	1,742	1,886	1,913	1,976	1,813	1,789
Processing, Manufacturing	2,529	2,396	1,751	1,427	1,502	1,395	1,414	1,445	1,354	1,235
Business, Finance & Administration Occupations	888	874	788	833	899	904	876	849	811	792
Social Science, Education, Government	427	373	354	520	616	688	731	687	608	659
Primary Industry	267	245	344	347	411	409	380	418	403	379
Management Occupations	212	187	229	300	361	317	360	373	299	407
Natural & Applied Sciences & Related	209	176	201	254	279	255	232	257	277	260
Art, Culture, Recreation	78	71	76	72	71	99	91	90	115	89
Not Coded	20	118	34	378	245	260	173	71	54	61
<b>Total</b>	<b>17,265</b>	<b>17,109</b>	<b>15,508</b>	<b>15,039</b>	<b>15,144</b>	<b>15,136</b>	<b>14,979</b>	<b>15,052</b>	<b>14,442</b>	<b>14,167</b>



### 3.6 Part of Body Injured

**Table 14 - All Injuries by Part of Body Injured ("Stickman"<sup>20</sup> Codes), 2007 to 2016**

Stickman Code Description	2007	2008	2009	2010	2011	2012	2013	2014	2015	2016
Hand / fingers	7,158	6,991	6,204	5,895	6,161	6,017	5,659	5,675	5,421	5,229
Multiple	6,260	6,091	5,716	5,687	5,793	5,781	5,227	5,467	5,466	5,134
Lower Back	5,042	4,956	4,590	4,482	4,242	4,224	4,097	4,293	3,940	3,976
Lower Leg	3,393	3,536	3,224	3,289	3,291	3,281	3,308	3,455	3,209	3,320
Lower Arm	2,771	2,860	2,343	2,348	2,357	2,340	2,289	2,274	2,344	2,154
Eyes	2,568	2,396	1,999	1,951	2,162	1,950	1,655	1,582	1,544	1,497
Shoulder	1,572	1,729	1,602	1,540	1,637	1,577	1,637	1,675	1,600	1,663
Foot / toes	1,153	1,073	1,061	921	1,018	945	965	901	941	941
Miscellaneous	1,097	1,045	1,035	1,074	1,104	1,012	1,084	972	953	1,117
Ribs / Chest	928	874	819	735	745	761	742	744	663	620
Head	746	713	753	731	802	803	844	951	871	1,039
Abdomen	469	446	401	338	432	373	329	336	305	307
Hearing	742	681	664	651	655	666	687	544	508	624
Neck	302	324	278	300	307	294	299	323	295	323
Upper Back	250	292	226	251	226	232	262	268	255	329
Upper Leg	231	261	262	225	237	202	198	231	201	182
Cardiovascular/ Respiratory System	178	180	144	168	122	148	147	112	101	116
Pelvis	157	167	185	161	174	170	148	169	157	152
Upper arm	144	225	170	181	193	179	159	186	154	204
Occupational Disease	37	36	35	29	32	41	30	32	26	20
Not Coded	53	31	18	13	16	21	11	12	15	13
<b>Total</b>	<b>35,251</b>	<b>34,907</b>	<b>31,729</b>	<b>30,970</b>	<b>31,706</b>	<b>31,017</b>	<b>29,777</b>	<b>30,202</b>	<b>28,969</b>	<b>28,960</b>

<sup>20</sup> WCB Coding system for all injuries where body part injured is related to a stick figure: A=head, B=Eyes, C=neck, D=shoulder etc.



**Table 15 - Time Loss Injuries by Part of Body Affected, 2007 to 2016**

Part of Body <sup>21</sup>	2007	2008	2009	2010	2011	2012	2013	2014	2015	2016
<b>Trunk</b>	<b>7,051</b>	<b>6,706</b>	<b>5,886</b>	<b>5,269</b>	<b>5,553</b>	<b>5,714</b>	<b>5,548</b>	<b>5,761</b>	<b>5,282</b>	<b>5,404</b>
Back including spine & spinal cord	4,905	4,587	4,208	3,780	3,829	3,874	3,741	3,906	3,578	3,513
Other trunk	2,146	2,119	1,678	1,489	1,724	1,840	1,807	1,855	1,704	1,891
<b>Upper Extremities</b>	<b>4,089</b>	<b>3,957</b>	<b>3,479</b>	<b>3,254</b>	<b>3,315</b>	<b>3,434</b>	<b>3,317</b>	<b>3,261</b>	<b>3,223</b>	<b>2,984</b>
Fingers	1,668	1,523	1,417	1,260	1,297	1,417	1,355	1,279	1,382	1,264
Hands/wrists except fingers	1,345	1,269	1,088	829	932	1,061	1,014	1,094	993	903
Other upper extremities	1,076	1,165	974	1,165	1,086	956	948	888	848	817
<b>Lower Extremities</b>	<b>2,868</b>	<b>2,947</b>	<b>2,754</b>	<b>2,672</b>	<b>2,648</b>	<b>2,737</b>	<b>2,870</b>	<b>2,841</b>	<b>2,718</b>	<b>2,753</b>
Legs	1,367	1,448	1,307	1,298	1,308	1,345	1,445	1,469	1,369	1,363
Ankles / feet (not toes)	1,174	1,160	1,166	938	972	1,083	1,119	1,106	1,079	1,133
Other lower extremities	327	339	281	436	368	309	306	266	270	257
<b>Head and Neck</b>	<b>1,353</b>	<b>1,157</b>	<b>1,125</b>	<b>1,029</b>	<b>1,263</b>	<b>1,324</b>	<b>1,337</b>	<b>1,373</b>	<b>1,313</b>	<b>1,378</b>
Eyes	647	572	513	467	544	524	507	447	447	419
Other head	427	342	377	389	487	564	577	662	621	679
Neck	279	243	235	173	232	236	253	264	245	280
<b>Multiple body parts</b>	<b>1,677</b>	<b>2,055</b>	<b>2,078</b>	<b>2,320</b>	<b>2,217</b>	<b>1,716</b>	<b>1,674</b>	<b>1,615</b>	<b>1,662</b>	<b>1,356</b>
<b>Body Systems</b>	<b>198</b>	<b>163</b>	<b>150</b>	<b>196</b>	<b>125</b>	<b>165</b>	<b>179</b>	<b>180</b>	<b>208</b>	<b>260</b>
<b>Missing / Not Coded</b>	<b>29</b>	<b>124</b>	<b>36</b>	<b>299</b>	<b>23</b>	<b>46</b>	<b>54</b>	<b>21</b>	<b>36</b>	<b>32</b>
<b>Total</b>	<b>17,265</b>	<b>17,109</b>	<b>15,508</b>	<b>15,039</b>	<b>15,144</b>	<b>15,136</b>	<b>14,979</b>	<b>15,052</b>	<b>14,442</b>	<b>14,167</b>

### 3.7 Time Loss Injuries by Nature of Injury or Illness

**Table 16 - Time Loss Injuries by Nature of Injury or Illness, 2007 to 2016**

Nature of Injury or Illness <sup>22</sup>	2007	2008	2009	2010	2011	2012	2013	2014	2015	2016
---	------	------	------	------	------	------	------	------	------	------

<sup>21</sup> This table is based on the CSA Z795 coding standard.

<sup>22</sup> This table is based on the CSA Z795 coding standard. Some components of the other traumatic injuries category moved to systemic diseases category in 2009 after a review by the Association of Workers Compensation Boards and have been revised backward.



<b>Acute Traumatic</b>	<b>15,632</b>	<b>15,753</b>	<b>14,563</b>	<b>13,258</b>	<b>13,881</b>	<b>13,583</b>	<b>13,435</b>	<b>13,527</b>	<b>12,956</b>	<b>12,671</b>
Sprains, Strains, Tears	9,743	9,765	8,827	7,926	7,897	7,693	7,693	8,005	7,641	7,297
Other Traumatic Injuries and Disorders	1,091	1,537	1,570	1,760	2,202	1,844	1,874	1,701	1,639	1,869
Open Wounds	1,609	1,556	1,374	1,258	1,286	1,345	1,272	1,196	1,229	1,148
Surface Wounds, Bruises	1,867	1,693	1,590	1,251	1,273	1,414	1,275	1,192	1,124	992
Fractures, Dislocations	983	904	911	824	987	1,046	1,068	1,152	1,070	1,119
Burns	339	298	291	239	236	241	253	281	253	246
<b>Multiple Diseases, Conditions and Disorders</b>	<b>1,389</b>	<b>1,194</b>	<b>905</b>	<b>1,106</b>	<b>1,238</b>	<b>1,510</b>	<b>1,491</b>	<b>1,505</b>	<b>1,452</b>	<b>1,465</b>
Systemic Diseases and Disorders	1,241	1,076	795	756	850	1,213	1,211	1,161	1,143	1,115
Symptoms, Signs, Ill-Defined Conditions	52	33	48	235	300	193	169	244	173	176
Other Diseases, Conditions and Disorders	70	57	28	82	60	67	88	80	114	149
Infectious and Parasitic Diseases	19	20	24	18	9	8	11	6	6	14
Neoplasms, Tumors and Cancer	7	8	10	15	19	29	12	14	16	11
<b>Occupational Disease</b>	<b>244</b>	<b>162</b>	<b>40</b>	<b>675</b>	<b>25</b>	<b>43</b>	<b>53</b>	<b>20</b>	<b>34</b>	<b>31</b>
<b>Total</b>	<b>17,265</b>	<b>17,109</b>	<b>15,508</b>	<b>15,039</b>	<b>15,144</b>	<b>15,136</b>	<b>14,979</b>	<b>15,052</b>	<b>14,442</b>	<b>14,167</b>

### 3.8 Time Loss Injuries by Source of Injury or Illness

Primary Source of Injury or Illness <sup>23</sup>	2007	2008	2009	2010	2011	2012	2013	2014	2015	2016
Persons, Plants, Animals and Minerals <sup>24</sup>	5,621	5,474	4,735	4,776	4,980	4,976	5,142	5,104	4,983	4,846

<sup>23</sup> This table is based on the CSA Z795 coding standard.

<sup>24</sup> This category includes injuries sustained due to the bodily motion of the injured worker, repetitive motions and injuries caused by co-workers, customers or others such as healthcare patients.



Persons - bodily position or repetitive motion of injured/ ill worker	4,224	3,957	3,192	3,221	3,576	3,442	3,633	3,516	3,360	3,134
Persons - other than injured worker (e.g. patients or co - workers)	1,136	1,238	1,254	1,242	1,104	1,237	1,221	1,259	1,331	1,385
Other persons, plants, animals, minerals	261	279	289	313	300	297	288	329	292	327
<b>Structures and Surfaces</b>	<b>3,026</b>	<b>3,276</b>	<b>3,170</b>	<b>2,858</b>	<b>2,835</b>	<b>2,910</b>	<b>2,847</b>	<b>2,880</b>	<b>2,751</b>	<b>2,820</b>
<b>Parts and Materials</b>	<b>2,399</b>	<b>2,371</b>	<b>2,053</b>	<b>1,826</b>	<b>1,772</b>	<b>1,781</b>	<b>1,699</b>	<b>1,568</b>	<b>1,514</b>	<b>1,377</b>
<b>Containers</b>	<b>1,763</b>	<b>1,704</b>	<b>1,628</b>	<b>1,468</b>	<b>1,402</b>	<b>1,393</b>	<b>1,332</b>	<b>1,402</b>	<b>1,401</b>	<b>1,284</b>
<b>Vehicles</b>	<b>854</b>	<b>844</b>	<b>856</b>	<b>707</b>	<b>799</b>	<b>779</b>	<b>837</b>	<b>899</b>	<b>823</b>	<b>867</b>
<b>Tools, Instruments and Equipment</b>	<b>1,213</b>	<b>1,144</b>	<b>1,097</b>	<b>1,101</b>	<b>1,104</b>	<b>1,074</b>	<b>965</b>	<b>1,090</b>	<b>1,029</b>	<b>1,099</b>
Hand tools - non-powered	641	634	635	560	587	564	501	579	514	531
Hand tools - powered	199	219	175	200	191	162	154	194	159	164
Other tools and equipment	373	291	287	341	326	348	310	317	356	404
<b>Machinery</b>	<b>843</b>	<b>765</b>	<b>663</b>	<b>647</b>	<b>787</b>	<b>739</b>	<b>756</b>	<b>722</b>	<b>702</b>	<b>694</b>
<b>Other Sources</b>	<b>763</b>	<b>648</b>	<b>611</b>	<b>557</b>	<b>621</b>	<b>607</b>	<b>635</b>	<b>668</b>	<b>519</b>	<b>469</b>
<b>Furniture and Fixtures</b>	<b>516</b>	<b>535</b>	<b>454</b>	<b>500</b>	<b>481</b>	<b>527</b>	<b>416</b>	<b>457</b>	<b>439</b>	<b>450</b>
<b>Chemicals and Chemical Products</b>	<b>206</b>	<b>193</b>	<b>177</b>	<b>223</b>	<b>197</b>	<b>184</b>	<b>188</b>	<b>161</b>	<b>152</b>	<b>158</b>
<b>Not Coded</b>	<b>61</b>	<b>155</b>	<b>64</b>	<b>376</b>	<b>166</b>	<b>166</b>	<b>162</b>	<b>101</b>	<b>129</b>	<b>103</b>
<b>Total</b>	<b>17,265</b>	<b>17,109</b>	<b>15,508</b>	<b>15,039</b>	<b>15,144</b>	<b>15,136</b>	<b>14,979</b>	<b>15,052</b>	<b>14,442</b>	<b>14,167</b>





### 3.9 Time Loss Injuries by Event or Exposure of Injury or Illness

**Table 18 - Time Loss Injuries by Type of Event or Exposure of Injury or Illness, 2007 to 2016**

Type of Event or Exposure <sup>25</sup>	2007	2008	2009	2010	2011	2012	2013	2014	2015	2016
<b>Bodily Reaction and Exertion</b>	<b>8,334</b>	<b>8,260</b>	<b>7,261</b>	<b>6,969</b>	<b>7,203</b>	<b>7,007</b>	<b>7,064</b>	<b>7,154</b>	<b>6,687</b>	<b>6,524</b>
Overexertion	3,803	4,228	3,993	3,445	3,092	3,098	2,904	2,968	2,734	2,347
Bodily reaction	3,087	2,579	2,139	2,804	3,273	2,838	3,067	3,196	3,008	3,342
Repetitive motions	1,444	1,453	1,129	720	838	1,071	1,093	990	945	835
<b>Contact with Objects, Equipment</b>	<b>4,744</b>	<b>4,463</b>	<b>4,051</b>	<b>3,929</b>	<b>3,983</b>	<b>3,940</b>	<b>3,764</b>	<b>3,667</b>	<b>3,527</b>	<b>3,241</b>
Struck by objects	2,371	2,156	2,648	2,457	2,324	2,257	2,113	2,134	2,058	1,824
Struck against objects	1,064	1,081	42	400	625	709	758	733	747	716
Caught in objects	849	847	1,037	834	797	745	699	677	589	535
Rubbed or abraded	460	379	324	238	237	229	194	123	133	166
<b>Falls</b>	<b>2,794</b>	<b>2,955</b>	<b>2,905</b>	<b>2,668</b>	<b>2,623</b>	<b>2,710</b>	<b>2,576</b>	<b>2,751</b>	<b>2,596</b>	<b>2,688</b>
Fall on same level	1,929	2,097	2,185	1,904	1,865	1,928	1,844	2,006	1,822	1,628
Fall from height	865	858	720	764	758	782	732	745	774	1,060
<b>Exposure to Harmful Substances</b>	<b>694</b>	<b>618</b>	<b>565</b>	<b>550</b>	<b>588</b>	<b>626</b>	<b>620</b>	<b>628</b>	<b>594</b>	<b>539</b>
<b>Transportation Incidents</b>	<b>403</b>	<b>370</b>	<b>351</b>	<b>254</b>	<b>330</b>	<b>310</b>	<b>371</b>	<b>353</b>	<b>344</b>	<b>355</b>
<b>Assaults and Violent Acts</b>	<b>239</b>	<b>292</b>	<b>308</b>	<b>346</b>	<b>348</b>	<b>450</b>	<b>467</b>	<b>424</b>	<b>618</b>	<b>747</b>
<b>Fires and Explosions</b>	<b>25</b>	<b>16</b>	<b>25</b>	<b>3</b>	<b>17</b>	<b>25</b>	<b>37</b>	<b>39</b>	<b>25</b>	<b>30</b>
<b>Event Unknown / Missing / Not Coded</b>	<b>32</b>	<b>135</b>	<b>42</b>	<b>320</b>	<b>52</b>	<b>68</b>	<b>80</b>	<b>36</b>	<b>51</b>	<b>43</b>
<b>Total</b>	<b>17,265</b>	<b>17,109</b>	<b>15,508</b>	<b>15,039</b>	<b>15,144</b>	<b>15,136</b>	<b>14,979</b>	<b>15,052</b>	<b>14,442</b>	<b>14,167</b>

<sup>25</sup> This table is based on the CSA Z795 coding standard.



### 3.10 Musculoskeletal Injuries

**Table 19 - Musculoskeletal Time Loss Injuries (MSI), 2007 to 2016**

Type of Injury	2007	2008	2009	2010	2011	2012	2013	2014	2015	2016
Musculoskeletal Injuries	10,732	10,663	9,551	8,813	8,997	9,060	9,022	9,340	8,939	8,641
Non-Musculoskeletal <sup>26 27</sup>	6,513	6,328	5,923	5,923	6,124	6,033	5,907	5,692	5,469	5,497
<b>Total</b>	<b>17,245</b>	<b>16,991</b>	<b>15,474</b>	<b>14,736</b>	<b>15,121</b>	<b>15,093</b>	<b>14,929</b>	<b>15,032</b>	<b>14,408</b>	<b>14,138</b>
<b>Musculoskeletal (% of Total)</b>	<b>62.2%</b>	<b>62.8%</b>	<b>61.7%</b>	<b>59.8%</b>	<b>59.5%</b>	<b>60.0%</b>	<b>60.4%</b>	<b>62.1%</b>	<b>62.0%</b>	<b>61.1%</b>

<sup>26</sup> Examples include fractures, open wounds, burns, occupational diseases, hearing loss.

<sup>27</sup> Includes missing, not coded and unknown events.



Figure 25 - The Proportion of Musculoskeletal Injuries, 2007 to 2016

